



St Mary's Christian Brothers' Grammar School

SAFEGUARDING & CHILD PROTECTION

September 2024



St Mary's Grammar School

Safeguarding & Child Protection Policy

CONTENTS

1	Our School's Child Protection Ethos and Key Principles of Safeguarding
2	Related Policies
3	The School Safeguarding Team
4	Definitions of Harm
5	Responding to a Safeguarding Concern
6	Consent, Confidentiality, Information Sharing and Record Keeping
7	Safe Recruitment Procedures
8	Code of Conduct
9	The Preventative Curriculum
10	Monitoring and Evaluation
11	Appendices
	Appendix 1 Note of Concern
	Appendix 2 Specific Types of Abuse
	Appendix 3 Children with Increased Vulnerabilities
	Appendix 4 Signs and Symptoms of Child Abuse
	Appendix 5 If a Parent Has a Potential Child Protection Concern Within the School
	Appendix 6 Procedure Where the School Has Concerns about Possible Abuse
	Appendix 7 Dealing with Allegations of Abuse against a Member of Staff
	Appendix 8 Sample Code of Conduct for Staff and Volunteers in Schools

1 CHILD PROTECTION ETHOS -

St Mary's Christian Brothers' Grammar School strives to educate all its pupils within an environment where the Catholic traditions of learning, truth, justice, respect and community are promoted. Our central ethos positions the welfare of each pupil as paramount.

Our policy applies to all staff, governors and volunteers working in the school.

We in St. Mary's Christian Brothers' Grammar School have a responsibility for the safeguarding and child protection of the students in our care and we will carry out this duty by providing a caring, supportive and safe environment, where each child is valued for his unique talents and abilities, and in which all our young people can learn and develop to their full potential. All staff, teaching and non-teaching should be alert to the signs of possible abuse and should know the procedures to be followed. This policy sets out guidance on the action, which is required where abuse or harm to a child is suspected and outlines referral procedures within our school.

AIMS AND OBJECTIVES

The overall aim of this policy is to safeguard and promote the welfare of the children in our care. In situations where child abuse is suspected, our paramount responsibility is to the child.

- A proper balance must be struck between protecting children and respecting the rights and needs of parents and families but, where there is a conflict, the child's interest must always come first.
- In so far as legal requirements permit, the right is confidentiality for parents, careers, members of staff and students must be respected and information will only be shared in the interest of the student's welfare.

This will be achieved by:

- Continuing to develop awareness in all staff of the need for Child Protection (particular care should be taken with children with disabilities and SEN) and their responsibilities in identifying abuse.
- Ensuring that all staff are aware of referral procedures within the school.
- Monitoring children who have been identified as 'at risk'.
- Ensuring that outside agencies are involved where appropriate.
- Ensuring that key concepts of Child Protection are integrated within the curriculum especially via PSHE.
- Creating an environment where children feel secure, have their viewpoints valued, are encouraged to talk and are listened to.

The term 'abuse' covers **neglect, physical injury, sexual abuse, exploitation and emotional abuse. (Appendix 4)**

The policy is a statement of the school's commitment to ensuring that no abuse is suffered at school and that abuse suffered outside school, when detected, is dealt with appropriately.

Key Principles of Safeguarding and Child Protection

The general principles, which underpin our work, are those set out in the UN Convention on the Rights of the Child and are enshrined in the Children (Northern Ireland) Order 1995, “Co-operating to safeguard children and young people in Northern Ireland” (DHSSPSNI, 2017), the Department of Education (Northern Ireland) guidance “Safeguarding and Child Protection in Schools” Circular 2017/04 (amended September 2023) and the SBNI Core Child Protection Policy and Procedures (2017).

The following principles form the basis of our Child Protection Policy:

- The child or young person’s welfare is paramount;
- The voice of the child or young person should be heard;
- Parents are supported to exercise parental responsibility and families helped stay together;
- Partnership;
- Prevention;
- Responses should be proportionate to the circumstances;
- Protection; and
- Evidence based and informed decision making.

Adult Safeguarding

Adult safeguarding (students over 18 years of age) is based on fundamental human rights and on respecting the rights of adults as individuals, treating all adults with dignity and respecting their right to choose. It involves empowering and enabling all adults, including those at risk of harm, to manage their own health and well-being and to keep themselves safe. It extends to intervening to protect where harm has occurred or is likely to occur and promoting access to justice. All adults at risk should be central to any actions and decisions affecting their lives.

We will follow the procedures outlined in this policy when responding to concerns or disclosures of abuse relating to our students who are 18 years or over.

2 OTHER RELATED POLICIES

The school has a duty to ensure that safeguarding permeates all activities and functions. The child protection policy therefore complements and supports a range of other school policies including:

- Anti-Bullying
- Attendance
- Drugs
- Positive Behaviour Management
- Staff Code of Conduct
- Complaints
- Educational Visits
- E Safety
- Managing Critical Incidents
- First Aid and Administration of Medicines Procedures
- Health and Safety

- Data Protection
- Relationships and Sexuality Education
- Special Educational Needs and Inclusion
- Use of Mobile Phones/Cameras
- Use of Reasonable Force/Safe Handling

These policies are available to parents and any parent wishing to have a copy should contact the School office or visit the school website at <https://stmaryscbgs.com/policies/>

SCHOOL PROCEDURES

The School Safeguarding Team

The following are members of the school's Safeguarding Team:

- Chair of the Board of Governors – Mr Sean Mahon
- Designated Governor for Child Protection – Mrs Eileen Donnelly
- Principal – Mr Brendan McComb
- Designated Teacher – Mrs Amanda Barr (Vice Principal)
- Deputy Designated Teacher(s) Mr Paddy Linden, Mrs Michaela Lewis and Mr Raymond Herron (Senior teachers)

Mr Paddy Linden, Senior Teacher, assumes the responsibility when the designated teacher is absent or unavailable.

Mrs Michaela Lewis, Senior Teacher and Mr Raymond Herron, Senior Teacher are both Deputy Designated Teachers and assume the responsibility when the designated teacher and lead DDT in the absent or unavailable.

If both Mrs Barr and Mr Linden are absent the matter should then be referred to another DDTCP.

Members of staff, both teaching and ancillary, are aware of the designations.

The process of recruitment and appointment of staff includes an Access NI check of the possible criminal background of people who are likely to have substantial unsupervised access to children.

Information for parents/guardians of school procedures will be regularly published (normally in the summer post)

In the professional contact with pupils, as laid out in the Code of Conduct for Staff, (**Appendix 8**), teachers must protect themselves especially when meeting on a one-to-one basis with students and all staff should bear in mind that even perfectly innocent actions can sometimes be misconstrued (please refer to the School's **Safe Handling Policy**). Teachers who hear an

allegation of abuse against another member of staff should report the matter immediately to the **Designated Teacher**.

Any member of staff who has a concern about the welfare or safety of a child or young person should complete a 'Note of Concern'. (**Appendix 1**)

All members of staff, both teaching and ancillary, are made aware of the types and symptoms of possible abuse (**Appendix 2**). They are encouraged to be vigilant and to alert the **Designated Teacher** of any suspicion of abuse. Where signs of abuse indicate the mere possibility of abuse and there is no allegation, or even firm suspicion, then the situation will be monitored carefully but discretely either to allay or confirm initial concerns. **Allegations of child abuse must always be given the highest priority.**

Where abuse is suspected by a teacher, he/she will refer to the **Designated Teacher**, but may first seek clarification from the child. Questioning should be for clarification purposes only and at no time should leading questions be asked. Notes of any allegations must be taken for future referral. The child will be assured that information offered will be disclosed only to those professionals who need to know but **no undertaking of confidentiality can be given by any teacher.**

Where abuse is suspected by non-teaching staff it is to be reported to the **Designated Teacher**.

In all cases where abuse is suspected, or where an allegation has been made, the **Designated Teacher** will inform the Principal and will refer the case(s) to, or consult with, social services. Where physical or sexual abuse is suspected or alleged, the case(s) will be referred to the Police. The Chairperson of the Board of Governors will also be notified. The guidance and procedures set out in Circular 2015/13 will be followed in these instances.

Where the Principal is suspected or alleged to have abused a child, the **Designated Teacher** will report the matter immediately to social services, the Chairperson of the Board of Governors and, if appropriate, to the Police.

Where the **Designated Teacher** is suspected or alleged to have abused a child the member of staff who first becomes aware of a possible offence will approach the **Deputy Designated Teacher** who, in turn, will inform the **Principal** immediately.

In every case where a serious complaint is made against a member of staff, the Principal, or Chairperson of the Board of Governors, as appropriate, will inform the complainant, if necessary, on a regular basis, of the investigations which have been, or are being, made and their outcome.

The above reporting and referral procedures will also be employed in cases of **peer sexual abuse**.

Complying with these procedures ensures that a staff member will receive full support and will not be legally or financially liable.

The consequences of not reporting suspicions of a student being abused could be far more serious than making a report which proves to be unfounded.

In all cases where there is reasonable suspicion that a member of staff has been involved in a case of abusing a pupil, that member of staff will be suspended with pay from duty pending a full investigation. (If deemed proportionate or alternative safeguarding measures will be put in place pending a full investigation and, if deemed necessary, legal prosecution).

All members of staff have been made aware of the procedures outlined above (**Appendix 6**).

An aspect of Child Protection is creating a culture of non-tolerance of bullying which is **never** acceptable in any of its manifestations and the School has a number of infra-structural measures to prevent it and a procedure for dealing with any instances of it.

- The school provides a structured counselling support service affording every pupil the opportunity to approach any support teacher at any time. Family Works Counselling counsellors work in the school.
- All teachers are encouraged to be vigilant to detect instances of bullying and to be alert for pupils displaying symptoms of being a victim of bullying.
- Any approach by those with parental authority concerning knowledge or suspicion of bullying is taken seriously and investigated.
- Peers raising concerns for a fellow pupil re bullying have their concerns fully explored.
- Each class in Years 8-12 have a P.S.E period each week. A substantial portion of the programme followed is directly or indirectly focused on bullying issues.
- The programme of study followed by each class in Years 13-14 non-examination RS classes has a significant component devoted to bullying issues and conflict resolution.
- Outside agencies are invited to the school for appropriate student learning opportunities.

The school's **Anti-Bullying Policy** clarifies our approach to preventing and dealing with instances of bullying.

DEALING WITH DISCLOSURES OF ABUSE

If a child chooses to tell a member of staff about possible abuse, there are a number of things that should be done to support the child:

- stay calm and be available to listen
- listen with the utmost care to what the child is saying
- question normally without pressurising
- do not interrogate or put words into the child's mouth
- complete a 'Note of Concern' (Appendix 1)
- do not make promises other than assuring the child of school support
- reassure the child and let them know they were right to inform us
- inform the child that this information will now have to be passed on
- follow our school procedures
- immediately inform the **Designated Teacher**
- seek the advice of the **Designated Teacher** if the child is too distressed to continue in school
- know and accept your limitations and realise that the **Designated Teacher** is in place to provide appropriate support for the pupil and for you.

MONITORING AND RECORD KEEPING

It is essential that accurate records be kept where there are concerns about the welfare of a child. These records should then be kept in secure, confidential files, which are separate from the child's school records.

Staff must keep the **Designated Teacher** informed of:

- poor attendance & punctuality
- concerns about appearance and dress
- changed or unusual behaviour from normal
- concerns about health and emotional well being
- deterioration in educational progress
- discussions with parents about concerns relating to their child
- concerns about home conditions or situations
- concerns about pupil-on-pupil abuse (including serious bullying).

When there is suspicion of significant harm to a child and a referral is made as much information as possible should be given about the nature of the suspicions, the child and the family. Use of previous records (if available) may prove to be particularly useful in this respect. A copy of any referral to Social Services must be kept on the confidential school File. A note must be made of the Duty Social Worker and the time at which the call is made. Parents should be informed of any school referrals.

Reports may be needed for Child Protection Case conferences or the criminal/civil courts. Consequently, records and reports should be:

- factual (no opinions)
- non-judgemental (no assumptions)
- clear
- accurate
- relevant.

ROLES AND RESPONSIBILITIES

Board of Governors must ensure that:

- A Designated Governor for Child Protection is appointed (Mrs Eileen Donnelly)
- A Designated and Deputy Designated Teacher are appointed in their schools
- They have a full understanding of the roles of the Designated and Deputy Designated Teachers for Child Protection.
- Safeguarding and child protection training is given to all staff and governors including refresher training.
- Relevant safeguarding information and guidance is disseminated to all staff and governors with the opportunity to discuss requirements and impact on roles and responsibilities.

- The school has a Child Protection Policy which is reviewed annually and parents and pupils receive a copy of the child protection policy and complaints procedure every two years (see school website, policy section)
- The school has an Anti-Bullying Policy (see policy section, school website) which is reviewed at intervals of no more than four years and maintains a record of all incidents of bullying or alleged bullying. See the Addressing Bullying in Schools Act (NI) 2016.
- The school ensures that other safeguarding policies are reviewed at least every 3 years or as specified in relevant guidance.
- There is a code of conduct for all adults working in the school (see Appendix 8)
- All school staff and volunteers are recruited and vetted, in line with DE Circular 2012/19 and DE Circular 2013/01.
- They receive a full annual report on all child protection matters (It is best practice that they receive a termly report of child protection activities). This report should include details of the preventative curriculum and any initiatives or awareness raising undertaken within the school, including training for staff.
- The school maintains the following child protection records in line with DE Circulars 2015/13 Dealing with Allegations of Abuse Against a Member of Staff and 2020/07 Child Protection: Record Keeping in Schools: Safeguarding and child protection concerns; disclosures of abuse; allegations against staff and actions taken to investigate and deal with outcomes; staff induction and training.

Chair of Board of Governors

The Chairperson of the BoG plays a pivotal role in creating and maintaining the safeguarding ethos within the school environment.

In the event of a safeguarding or child protection complaint being made against the Principal, it is the Chairperson who must assume lead responsibility for managing the complaint/allegation in keeping with guidance issued by the Department (and relevant guidance from other Departments when it comes to other early years settings), employing authorities, and the school's own policies and procedures.

The Chairperson is responsible for ensuring child protection records are kept and for signing and dating annually the Record of Child Abuse Complaints against staff members even if there have been no entries.

Designated Governor for Child Protection

The BoG delegates a specific member of the governing body to take the lead in safeguarding/child protection issues in order to advise the governors on: -

- The role of the designated teachers;
- The content of child protection policies;

- The content of a code of conduct for adults within the school;
- The content of the termly updates and full Annual Designated Teachers Report;
- Recruitment, selection, vetting and induction of staff.

In St. Mary's the Designated Governor is Mrs Eileen Donnelly.

Designated Teacher for Child Protection

Every school is required to have a DT and DDT with responsibility for child protection (see safeguarding staff in St. Mary's listed on page 4 of the policy). These are highly skilled roles developed and supported through a structured training programme, requiring knowledge and professional judgement on complex and emotive issues. The role involves:

- The induction and training of all school staff including support staff.
- Being available to discuss safeguarding or child protection concerns of any member of staff.
- Having responsibility for record keeping of all child protection concerns.
- Maintaining a current awareness of early intervention supports and other local services e.g., Family Support Hubs.
- Making referrals to Social Services or PSNI where appropriate.
- Liaison with the EA Designated Officers for Child Protection.
- Keeping the school Principal informed.
- Taking the lead responsibility for the development of the school's child protection policy.
- The promotion of a safeguarding and child protection ethos in the school.
- Compiling written reports to the BoG regarding child protection

Deputy Designated Teacher for Child Protection

The role of the DDT is to work co-operatively with the DT in fulfilling his/her responsibilities.

It is important that the DDT works in partnership with the DT so that he/she develops sufficient knowledge and experience to undertake the duties of the DT when required. DDTs are also provided with the same specialist training by CPSS to help them in their role.

The School Principal

The Principal, as the Secretary to the BoG, will assist the BoG to fulfil its safeguarding and child protection duties, keeping them informed of any changes to guidance, procedure or legislation relating to safeguarding and child protection, ensuring any circulars and guidance from DE are shared promptly, and timely inclusion of child protection activities on the BoG meeting agenda. In addition, the Principal takes the lead in managing child protection concerns relating to staff.

The Principal has delegated responsibility for establishing and managing the safeguarding and child protection systems within the school. This includes the appointment and management of suitable staff to the key roles of DT and DDT Designated Teacher posts and ensuring that new

staff and volunteers have safeguarding and child protection awareness sessions as part of an induction programme.

It is essential that there is protected time and support to allow the DTs to carry out this important role effectively and that DTs are selected based on knowledge and skills required to fulfil the role.

The Principal must ensure that parents and pupils receive a copy, or summary, of the Child Protection Policy at intake and, at a minimum, every two years.

Members of School Staff

- Members of staff **must** refer concerns or disclosures initially to the Designated Teacher for Child Protection or to the Deputy Designated Teacher if he/she is not available.
- Class teachers and Year Heads should complete the Note of Concern ([See Appendix 1](#)) if there are safeguarding concerns such as: poor presentation, changed or unusual behaviour including self-harm and suicidal thoughts, deterioration in educational progress, concerns about pupil abuse or serious bullying and concerns about home circumstances including disclosures of domestic abuse.
- **Staff should not** give children a guarantee of total confidentiality regarding their disclosures, should not investigate nor should they ask leading questions

Support Staff

- If any member of the support staff has concerns about a child or staff member, they should report these concerns to the Designated Teacher or Deputy Designated Teacher if she is not available. A detailed written record of the concerns will be made and any further necessary action will be taken.

Parents

The primary responsibility for safeguarding and protection of children rests with parents who should feel confident about raising any concerns they have in relation to their child.

- Parents can play their part in safeguarding by informing the school.
- If the child has a medical condition or educational need.
- If there are any Court Orders relating to the safety or wellbeing of a parent or child.
- If there is any change in a child's circumstances for example - change of address, change of contact details, change of name, change of parental responsibility.
- If there are any changes to arrangements regarding travel to and from school parents/guardians are required to update the school.
- If their child is absent and should send in a note/ email on the child's return to school. This assures the school that the parent/carer knows about the absence.
- Parents have access to the SIMs Parent App and can update most personal information (including contact information) via this App.

It is essential that we have up to date contact details for the parent/carer.

4 CHILD PROTECTION DEFINITIONS

Definition of Harm

(Co-operating to Safeguard Children and young People in Northern Ireland August 2017)

Harm can be suffered by a child or young person by acts of abuse perpetrated upon them by others. Abuse can happen in any family, but children may be more at risk if their parents have problems with drugs, alcohol and mental health, or if they live in a home where domestic abuse happens. Abuse can also occur outside of the family environment. Evidence shows that babies and children with disabilities can be more vulnerable to suffering abuse.

Although the harm from the abuse might take a long time to be recognisable in the child or young person, professionals may be in a position to observe its indicators earlier, for example, in the way that a parent interacts with their child. Effective and ongoing information sharing is key between professionals.

Harm from abuse is not always straightforward to identify and a child or young person may experience more than one type of harm.

Harm can be caused by:

Sexual abuse

Emotional abuse

Physical abuse

Neglect

Exploitation

SEXUAL ABUSE occurs when others use and exploit children sexually for their own gratification or gain or the gratification of others. Sexual abuse may involve physical contact, including assault by penetration (for example, rape, or oral sex) or non-penetrative acts such as masturbation, kissing, rubbing and touching outside clothing. It may include non-contact activities, such as involving children in the production of sexual images, forcing children to look at sexual images or watch sexual activities, encouraging children to behave in sexually inappropriate ways or grooming a child in preparation for abuse (including via e-technology). Sexual abuse is not solely perpetrated by adult males. Women can commit acts of sexual abuse, as can other children.

EMOTIONAL ABUSE is the persistent emotional maltreatment of a child. It is also sometimes called psychological abuse and it can have severe and persistent adverse effects on a child's emotional development.

Emotional abuse may involve deliberately telling a child that they are worthless, or unloved and inadequate. It may include not giving a child opportunity to express their views, deliberately silencing them, or 'making fun' of what they say or how they communicate. Emotional abuse may involve bullying – including online bullying through social networks, online games or mobile phones – by a child's peers.

PHYSICAL ABUSE is deliberately physically hurting a child. It might take a variety of different forms, including hitting, biting, pinching, shaking, throwing, poisoning, burning or scalding, drowning or suffocating a child.

NEGLECT is the failure to provide for a child's basic needs, whether it be adequate food, clothing, hygiene, supervision or shelter that is likely to result in the serious impairment of a child's health or development. Children who are neglected often also suffer from other types of abuse.

EXPLOITATION is the intentional ill-treatment, manipulation or abuse of power and control over a child or young person; to take selfish or unfair advantage of a child or young person or situation, for personal gain. It may manifest itself in many forms such as child labour, slavery, servitude, and engagement in criminal activity, begging, benefit or other financial fraud or child trafficking. It extends to the recruitment, transportation, transfer, harbouring or receipt of children for the purpose of exploitation. Exploitation can be sexual in nature.

Although 'exploitation' is not included in the categories of registration for the Child Protection Register, professionals should recognise that the abuse resulting from or caused by the exploitation of children and young people can be categorised within the existing CPR categories as children who have been exploited will have suffered from physical abuse, neglect, emotional abuse, sexual abuse or a combination of these forms of abuse.

Specific Types of Abuse

In addition to the types of abuse described above there are also some specific types of abuse that we in St. Mary's are aware of and have therefore included them in our policy. Please see **Appendix 2**

Children with Increased Vulnerabilities

Some children have increased risk of abuse due to specific vulnerabilities such as disability, lack of fluency in English or sexual orientation. We have included information about children with increased vulnerabilities in our policy. Please see **Appendix 3**

Signs and Symptoms of Abuse

The definition of signs and symptoms of abuse from the SBNI Regional Core Policies and Procedures guidance. Please see **Appendix 4**

Adult Safeguarding

An '**Adult at risk of harm**' is a person aged 18 or over, whose exposure to harm through abuse, exploitation or neglect may be increased by their:

- a) Personal characteristics and/or
- b) Life circumstances

Personal characteristics may include, but are not limited to, age, disability, special educational needs, illness, mental or physical frailty or impairment of, or disturbance in, the functioning of the mind or brain.

Life circumstances may include, but are not limited to, isolation, socio-economic factors and environmental living conditions.

An '**Adult in need of protection**' is a person aged 18 or over, whose exposure to harm through abuse, exploitation or neglect may be increased by their:

- a) Personal characteristics and/or

- b) Life circumstances and
- c) Who is unable to protect their own well-being, property, assets, rights or other interests; and
- d) Where the action or inaction of another person or persons is causing, or is likely to cause, him/her to be harmed.

5 Responding to Safeguarding and Child Protection Concerns

Safeguarding is more than child protection. Safeguarding begins with promotion and preventative activity which enables children and young people to grow up safely and securely in circumstances where their development and wellbeing is not adversely affected. It includes support to families and early intervention to meet the needs of children and continues through to child protection. Child protection refers specifically to the activity that is undertaken to protect individual children or young people who are suffering or are likely to suffer significant harm¹.

If a parent has a potential child protection concern within the school

In St. Mary's we aim to work closely with parents/guardians in supporting all aspects of their child's development and well-being. Any concerns a parent may have will be taken seriously and dealt with in a professional manner.

If a parent has a concern they can talk to the Class Teacher/Year Head, the Head of School or the Designated or Deputy Designated Teacher for child protection or the Principal.

If they are still concerned, they may talk to the Chair of the Board of Governors.

At any time, a parent may talk to a social worker in the local Gateway team or to the PSNI Central Referral Unit. Details of who to contact are shown in the flowchart in **Appendix 5**

Where School Has Concerns or Has Been Given Information about Possible Abuse by Someone Other Than a Member of Staff

In St. Mary's if a child makes a disclosure to a teacher or other member of staff which gives rise to concerns about possible abuse, or if a member of staff has concerns about a child, the member of staff will complete a Note of Concern (see **Appendix 1**) and act promptly. **They will not investigate** - this is a matter for Social Services - but will discuss these concerns with the Designated Teacher or with the Deputy Designated Teacher if he/she is not available.

The Designated Teacher will consult with the Principal or other relevant staff **always taking care to avoid due delay**. If required advice may be sought from the Education Authority Designated Officer for Child Protection. The Designated Teacher may also seek clarification from the child or young person, their parent/carer.

¹ Co-Operating to Safeguard Children and Young People in Northern Ireland (March 2016)
<https://www.health-ni.gov.uk/publications/co-operating-safeguard-children-and-young-people-northern-ireland>

If a child protection referral is not required the school may consider other options including monitoring, signposting or referring to other support agencies e.g., Family Support Hub with parental consent and, where appropriate, with the child/young person's consent.

If a child protection referral is required, the Designated Teacher will seek consent from the parent/carer and/or the child {if they are competent to give this} unless this would place the child at risk of significant harm.

The Designated Teacher will phone the Gateway team and/or the PSNI and will submit a completed UNOCINI referral form.

If the concern relates to a student over the age of 18 the Designated Teacher will discuss the concerns with the Trust Adult Safeguarding Team. This team will assess the level of risk.

Where appropriate the source of the concern will be informed of the action taken.

For further detail please see [Appendix 6](#)

Where a Complaint Has Been Made about Possible Abuse by a Member of the School's Staff or a Volunteer

When a complaint about possible child abuse is made against a member of staff the Principal (or the Designated Teacher if the Principal is not available) must be informed immediately. If the complaint is against the Principal, then the Designated Teacher should be informed, and he/she will inform the Chairperson of the Board of Governors who will consider what action is required in consultation with the employing authority. The procedure as outlined in [Appendix 7](#) will be followed.

6 CONSENT

Prior to making a referral to Social Services the consent of the parent/carers and/or the young person (if they are competent to give this) will normally be sought. The exception to this is where to seek such consent would put that child, young person or others at increased risk of significant harm or an adult at risk of serious harm, or it would undermine the prevention, detection or prosecution of a serious crime including where seeking consent might lead to interference with any potential investigation.

In circumstances where the consent of the parent/carer and/or the young person has been sought and is withheld we will consider and where possible respect their wishes. However, our primary consideration must be the safety and welfare of the child and we will make a referral in cases where consent is withheld if we believe on the basis of the information available that it is in the best interests of the child/young person to do so.

Students aged 18 or over:

There is a difficult balance between gaining consent for a referral into Adult Protection Gateway and also ensuring a vulnerable adult is protected from harm. Consent will always be sought from the person for a referral to statutory agencies.

If consent is withheld, then a referral will not be made into the Adult Protection Gateway unless there is reasonable doubt regarding the capacity of the adult to give/withhold consent. In this case contact will be made with the local Adult Protection Gateway to seek further advice. In situations where there is reasonable doubt regarding an individual's capacity, they will be informed of the referral, unless to do so would put them at any further risk.

The principle of consent may be overridden if there is an overriding public interest, for example in the following circumstances:

- the person causing the harm is a member of staff, a volunteer or someone who only has contact with the adult at risk because they both use the service; or
- consent has been provided under undue influence, coercion or duress;
- other people are at risk from the person causing harm;
- or a crime is alleged or suspected

Confidentiality and Information Sharing

Information given to members of staff about possible child abuse cannot be held "in confidence". In the interests of the child, staff have a responsibility to share relevant information about the protection of children with other professionals particularly the investigative agencies. In keeping with the principle of confidentiality, the sharing of information with school staff will be on a 'need to know' basis.

Where there have been, or are current, child protection concerns about a pupil who transfers to another school we will consider what information should be shared with the Designated Teacher in the receiving school.

Where it is necessary to safeguard children, information will be shared with other statutory agencies in accordance with the requirements of this policy, the school data protection policy and the General Data Protection Regulations (GDPR)

In accordance with DE guidance, we must consider and develop clear guidelines for the recording, storage, retention and destruction of both manual and electronic records where they relate to child protection concerns.

In order to meet these requirements all child protection records, information and confidential notes concerning pupils in St. Mary's are stored securely and only the Designated Teacher/Deputy Designated Teacher and Principal have access to them. In accordance with DE guidance on the disposal of child protection records these records will be stored from child's date of birth plus 30 years.

If information is held electronically, whether on a PC, a laptop or on a portable memory device, all must be encrypted and appropriately password protected.

These notes or records should be factual, objective and include what was seen, said, heard or reported. They should include details of the place and time and who was present and should be given to the Designated/Deputy Designated Teacher. The person who reports the incident must treat the matter in confidence.

7 SAFE RECRUITMENT PROCEDURES

Vetting checks are a key preventative measure in preventing unsuitable individuals' access to children and vulnerable adults through the education system and schools must ensure that all persons on school property are vetted, inducted and supervised as appropriate if they are engaged in regulated activity. All staff paid or unpaid who are appointed to positions in St. Mary's are vetted/supervised in accordance with relevant legislation and Departmental guidance.

8 CODE OF CONDUCT FOR ALL STAFF - PAID OR UNPAID

All actions concerning children and young people must uphold the best interests of the young person as a primary consideration. Staff must always be mindful of the fact that they hold a position of trust and that their behaviour towards the child and young people in their charge must be above reproach. All members of staff are expected to comply with the school's Code of Conduct for Employees and Volunteers which has been approved by the Board of Governors.

See **Appendix 8** for the staff Code of Conduct.

9 THE PREVENTATIVE CURRICULUM -

The statutory personal development curriculum requires schools to give specific attention to pupils' emotional wellbeing, health and safety, relationships, and the development of a moral thinking and value system. The curriculum also offers a medium to explore sensitive issues with children and young people in an age-appropriate way which helps them to develop appropriate protective behaviours. (DE guidance "Safeguarding and Child Protection in Schools" Circular 2017/04) – See refer to St. Mary's RSE Policy

St. Mary's seeks to promote pupils' awareness and understanding of safeguarding issues, including those related to child protection through its curriculum. The safeguarding of children is an important focus in the school's personal development programme and is also addressed where it arises within the context of subjects. Through the preventative curriculum we aim to build the confidence, self-esteem and personal resiliencies of children so that they can develop coping strategies and can make more positive choices in a range of situations.

Throughout the school year child protection issues are addressed through class assemblies and there is a permanent child protection notice in all classrooms with further details in the student homework diaries, which provides advice and displays child helpline numbers.

10 MONITORING AND EVALUATION

This policy will be reviewed annually by the Safeguarding Team and approved by the Board of Governors for dissemination to parents, pupils and staff. It will be implemented through the school's staff induction and training programme and as part of day-to-day practice. Compliance with the policy will be monitored on an on-going basis by the Designated Teacher for Child Protection and periodically by the Schools Safeguarding Team. The Board of Governors will also monitor child protection activity and the implementation of the Safeguarding and Child Protection policy on a regular basis through the provision of reports from the Designated Teacher.

APPENDIX 1

CONFIDENTIAL

NOTE OF CONCERN

Child Protection Record - Reports to Designated Teacher

Name of Pupil:
Year Group:
Date, Time of Incident/Disclosure:
Circumstances of Incident/Disclosure:
Nature And Description Of Concern:
Parties involved, including any witnesses to an event and what was said or done and by whom:
Action Taken At The Time:
Details Of Any Advice Sought, From Whom And When:
Any Further Action Taken:

Written Report Passed To Designated Teacher: Yes: No:
If 'No' state reason:
Date And Time Of Report To The Designated Teacher:
Written Note From Staff Member Placed On Pupil's Child Protection File
Yes No
If 'No' state reason:

Name of Staff Member Making the Report: _____

Signature of Staff Member: _____ **Date:** _____

Signature of Designated Teacher: _____ **Date:** _____

APPENDIX 2

Specific Types of Abuse

Grooming of a child or young person is always abusive and/or exploitative. It often involves perpetrator(s) gaining the trust of the child or young person or, in some cases, the trust of the family, friends or community, and/or making an emotional connection with the victim in order to facilitate abuse before the abuse begins. This may involve providing money, gifts, drugs and/or alcohol or more basic needs such as food, accommodation or clothing to develop the child's/young person's loyalty to and dependence upon the person(s) doing the grooming. The person(s) carrying out the abuse may differ from those involved in grooming which led to it, although this is not always the case. Grooming is often associated with Child Sexual Exploitation (CSE) but can be a precursor to other forms of abuse. Grooming may occur face to face, online and/or through social media, the latter making it more difficult to detect and identify.

Adults may misuse online settings e.g., chat rooms, social and gaming environments and other forms of digital communications, to try and establish contact with children and young people or to share information with other perpetrators, which creates a particular problem because this can occur in real time and there is no permanent record of the interaction or discussion held or information shared. Those working or volunteering with children or young people should be alert to signs that may indicate grooming and take early action in line with their child protection and safeguarding policies and procedures to enable preventative action to be taken, if possible, before harm occurs. Practitioners should be aware that those involved in grooming may themselves be children or young people and may be acting under the coercion or influence of adults. Such young people must be considered victims of those holding power over them. Careful consideration should always be given to any punitive approach or 'criminalising' young people who may, themselves, still be victims and/or acting under duress, control, threat, the fear of, or actual violence. In consultation with the PSNI and where necessary the PPS, HSC professionals must consider whether children used to groom others should be considered a child in need or requiring protection from significant harm

If the staff in St. Mary's become aware of signs that may indicate grooming, they will take early action and follow the school's child protection policies and procedures. The HSCT and PSNI should be involved as early as possible to ensure any evidence that may assist prosecution is not lost and to enable a disruption plan to reduce the victim's contact with the perpetrator(s) and reduce the perpetrator(s) control over the victim to be put in place without delay.

Child Sexual Exploitation (CSE) is a form of child sexual abuse. It occurs where an individual or group takes advantage of an imbalance of power to coerce, manipulate or deceive a child or young person under the age of 18 into sexual activity (a) in exchange for something the victim needs or wants, and/ or (b) for the financial advantage or increased status of the perpetrator or facilitator. The victim may have been sexually exploited even if the sexual activity appears consensual. Child sexual exploitation does not always involve physical contact; it can also occur through the use of technology. (Co-operating to Safeguard Children and Young People in NI. DHSSPS version 2.0 2017).

Any child under the age of eighteen, male or female, can be a victim of CSE. Although younger children can experience CSE, the average age at which concerns are first identified is 12-15 years of age. Sixteen- and seventeen-year-olds, although legally able to consent to sexual activity can also be sexually exploited.

CSE can be perpetrated by adults or by young people's peers, on an individual or group basis, or a combination of both, and can be perpetrated by females as well as males. While children in care are known to experience disproportionate risk of CSE, **the majority of CSE victims are living at home.**

Statutory Responsibilities

CSE is a form of child abuse and, as such, any member of staff suspecting that CSE is occurring will follow the school's child protection policy and procedures, including reporting to the appropriate agencies.

Domestic and Sexual Violence and Abuse

The Stopping Domestic and Sexual Violence and Abuse in Northern Ireland: A Seven Year Strategy (2016) defines domestic and sexual violence and abuse as follows:-

Domestic Violence and Abuse:

'threatening, controlling, coercive behaviour, violence or abuse (psychological, virtual, physical, verbal, sexual, financial or emotional) inflicted on anyone (irrespective of age, ethnicity, religion, gender, gender identity, sexual orientation or any form of disability) by a current or former intimate partner or family member.'

Sexual Violence and Abuse

'any behaviour (physical, psychological, verbal, virtual/online) perceived to be of a sexual nature which is controlling, coercive, exploitative, harmful, or unwanted that is inflicted on anyone (irrespective of age, ethnicity, religion, gender, gender identity, sexual orientation or any form of disability).' Please note that coercive, exploitative and harmful behaviour includes taking advantage of an individual's incapacity to give informed consent.

If it comes to the attention of school staff that Domestic Abuse, is or may be, affecting a child this will be passed on to the Designated/Deputy Designated Teacher who has an obligation to share the information with the Social Services Gateway Team.

Operation Encompass

We are an Operation Encompass school. Operation Encompass is an early intervention partnership between local Police and our school, aimed at supporting children who are victims of domestic violence and abuse. As a school, we recognise that children's exposure to domestic violence is a traumatic event for them.

Children experiencing domestic abuse are negatively impacted by this exposure. Domestic abuse has been identified as an Adverse Childhood Experience and can lead to emotional, physical and psychological harm. Operation Encompass aims to mitigate this harm by enabling the provision of immediate support. This rapid provision of support within the school environment means children are better safeguarded against the short, medium and long-term effects of domestic abuse.

As an Operation Encompass school, when the police have attended a domestic incident and one of our pupils is present, they will make contact with the school at the start of the next working day to share this information with a member of the school safeguarding team. This

will allow the school safeguarding team to provide immediate emotional support to this child as well as giving the designated teacher greater insight into any wider safeguarding concerns.

This information will be treated in strict confidence, like any other category of child protection information. It will be processed as per DE Circular 2020/07 'Child Protection Record Keeping in Schools' and a note will be made in the child's child protection file. The information received on an Operation Encompass call from the Police will only be shared outside of the safeguarding team on a proportionate and need to know basis. All members of the safeguarding team will complete online Operation Encompass training, so they are able to take these calls. Any staff responsible for answering the phone at school will be made aware of Operation Encompass and the need to pass these calls on with urgency to a member of the Safeguarding team.

Forced Marriage is a marriage conducted without the valid consent of one or both parties and where duress is a factor. Duress can include physical, psychological, financial, sexual and emotional pressure. Forced marriage is a criminal offence in Northern Ireland and if in St. Mary's we have knowledge or suspicion of a forced marriage in relation to a child or young person we will contact the PSNI immediately.

Children Who Display Harmful Sexual Behaviour

Learning about sex and sexual behaviour is a normal part of a child's development. It will help them as they grow up, and as they start to make decisions about relationships. As a school we support children and young people, through the Personal Development element of the curriculum, to develop their understanding of relationships and sexuality and the responsibilities of healthy relationships. Teachers are often therefore in a good position to consider if behaviour is within the normal continuum or otherwise.

It must also be borne in mind that sexually harmful behaviour is primarily a child protection concern. There may remain issues to be addressed through the school's positive behaviour policy, but it is important to always apply principles that remain child centred.

It is important to distinguish between different sexual behaviours - these can be defined as normal, inappropriate, abusive or violent. Normal sexual behaviour will generally have no need for intervention; however, consideration may be required as to appropriateness within a school setting. Inappropriate sexual behaviour requires some level of intervention, depending on the activity and level of concern. For example, a one-off incident may simply require liaising with parents on setting clear direction that the behaviour is unacceptable, explaining boundaries and providing information and education. Alternatively, if the behaviour is considered to be more serious, perhaps because there are a number of aspects of concern, advice from the EA CPSS may be required. The CPSS will advise if contact with PSNI or Social Services is required. We will also take guidance from DE Circular 2022/02 to address concerns about harmful sexualised behaviour displayed by children and young people.

Abusive Sexual Behaviours are of significant concern and guidance on the management of the pupils and referrals to other agencies such as Social Services or the Police should be sought from CPSS.

Some examples of abusive sexual behaviours are victimising intent or outcome, the misuse of power, coercion and force to ensure victim compliance, they may be intrusive and may

include elements of expressive violence, informed consent is lacking or is not given by the victim, for example because of their special needs or they may have been under the influence of alcohol or other substances

Violent Sexual Behaviours are also of significant concern. They may have features of threat, force, coercion or harm to others.

Some examples of violent sexual behaviour include physically violent sexual abuse, which is highly intrusive, instrumental violence which is physiologically and or sexually arousing to the perpetrator and may involve sadism.

Advice from CPSS will be required if we are aware of a young person displaying violent sexual behaviour.

Online safety

Online safety means acting and staying safe when engaging in the online world. It is wider than simply internet technology and includes electronic communication via text messages, social environments and apps, and using games consoles through any digital device. In all cases, in schools and elsewhere, it is a paramount concern.

The overall strategic direction for child safety online is the **Keeping Children and Young People Safe: An Online Safety Strategy**, published in February 2021. It sets out the Northern Ireland Executive's ambition that all children and young people enjoy the educational, social and economic benefits of the online world, and that they are empowered to do this safely, knowledgably and without fear.

The Strategy recognises that the ever-changing and fast-growing online environment presents both extensive educational benefits as well challenges in terms of keeping children and young people safe from the dangers of inappropriate communication and content.

We in St. Mary's have a responsibility to ensure that there is a reduced risk of pupils accessing harmful and inappropriate digital content and will be energetic in teaching pupils how to act responsibly and keep themselves safe. As a result, pupils should have a clear understanding of online safety issues and, individually, be able to demonstrate what a positive digital footprint might look like.

The school's actions and governance of online safety are reflected clearly in our safeguarding arrangements. Safeguarding and promoting pupils' welfare around digital technology is the responsibility of everyone who comes into contact with the pupils in the school or on school-organised activities.

Sexting is the sending or posting of sexually suggestive images, including nude or semi-nude photographs, via mobile or over the internet. There are two aspects to Sexting:

1. Sexting between individuals in a relationship

Children and young people consider this to be normal and often the result of a young person's natural curiosity about sex and their exploration of relationships. As a consequence, engaging in the taking or sharing of nudes and semi-nudes may not always be in a 'harmful' context. Nonetheless, staff must be aware that an image can be shared non-consensually, or a child can be groomed, tricked or coerced into sending nude and semi-nude images.

Pupils need to be aware that it is illegal, under the Sexual Offences (NI) Order 2008, to take, possess or share 'indecent images' of anyone under 18 even if they are the person in the picture (or even if they are aged 16+ and in a consensual relationship) and in these cases we will contact local police on 101 for advice and guidance. We may also seek advice from the EA Child Protection Support Service

Please be aware that, while offences may technically have been committed by the child/children involved, the matter will be dealt with sensitively and considering all of the circumstances and it is not necessarily the case that they will end up with a criminal record. It is important that particular care is taken in dealing with any such cases. Adopting scare tactics may discourage a young person from seeking help if they feel entrapped by the misuse of a sexual image.

2. Sharing an Inappropriate Image with an Intent to Cause Distress

If a pupil has been affected by inappropriate images or links on the internet it is important that it is **not forwarded to anyone else**. Schools are not required to investigate incidents. It is an offence under the Criminal Justice and Courts Act 2015 to share an inappropriate image of another person without the individual's consent.

If a young person has shared an inappropriate image of themselves that is now being shared further whether or not it is intended to cause distress, the child protection procedures of St. Mary's will be followed.

Adult Safeguarding

The main forms of abuse are:

Physical abuse

Physical abuse is the use of physical force or mistreatment of one person by another which may or may not result in actual physical injury. This may include hitting, pushing, rough handling, exposure to heat or cold, force feeding, improper administration of medication, denial of treatment, misuse or illegal use of restraint and deprivation of liberty.

Sexual Violence and Abuse

Sexual abuse is any behaviour perceived to be of a sexual nature which is unwanted or takes place without consent or understanding. Sexual violence and abuse can take many forms and may include non-contact sexual activities, such as indecent exposure, stalking, grooming, being made to look at or be involved in the production of sexually abusive material, or being made to watch sexual activities. It may involve physical contact, including but not limited to non-consensual penetrative sexual activities or non-penetrative sexual activities, such as intentional touching (known as groping). Sexual violence can be found across all sections of society, irrelevant of gender, age, ability, religion, race, ethnicity, personal circumstances, financial background or sexual orientation.

Psychological/Emotional Abuse

Psychological/emotional abuse is behaviour that is psychologically harmful or inflicts mental distress by threat, humiliation or other verbal/non-verbal conduct. This may include threats, humiliation or ridicule, provoking fear of violence, shouting, yelling and swearing, blaming, Controlling, Intimidation and Coercion.

Financial Abuse

Financial abuse is actual or attempted theft, fraud or burglary. It is the misappropriation or misuse of money, property, benefits, material goods or other asset transactions which the

person did not or could not consent to, or which were invalidated by intimidation, coercion or deception. This may include exploitation, embezzlement, withholding pension or benefits or pressure exerted around wills, property or inheritance.

Institutional Abuse

Institutional abuse is the mistreatment or neglect of an adult by a regime or individuals in settings which adults who may be at risk reside in or use. This can occur in any organisation, within and outside the HSC sector. Institutional abuse may occur when the routines, systems and regimes result in poor standards of care, poor practice and behaviours, inflexible regimes and rigid routines which violate the dignity and human rights of the adults and place them at risk of harm. Institutional abuse may occur within a culture that denies, restricts or curtails privacy, dignity, choice and independence. It involves the collective failure of a service provider or an organisation to provide safe and appropriate services and includes a failure to ensure that the necessary preventative and/or protective measures are in place.

Neglect occurs when a person deliberately withholds, or fails to provide, appropriate and adequate care and support which is required by another adult. It may be through a lack of knowledge or awareness, or through a failure to take reasonable action given the information and facts available to them at the time. It may include physical neglect to the extent that health or well-being is impaired, administering too much or too little medication, failure to provide access to appropriate health or social care, withholding the necessities of life, such as adequate nutrition, heating or clothing, or failure to intervene in situations that are dangerous to the person concerned or to others particularly when the person lacks the capacity to assess risk.

APPENDIX 3

Children with Increased Vulnerabilities

- **Children With a Disability**

Children and young people with disabilities (i.e., any child or young person who has a physical, sensory or learning impairment or a significant health condition) may be more vulnerable to abuse and those working with children with disabilities should be aware of any vulnerability factors associated with risk of harm, and any emerging child protection issues.

- **Children With Limited Fluency in English**

Children whose first language is not English/Newcomer pupils should be given the opportunity to express themselves to a member of staff or other professional with appropriate language/communication skills, especially where there are concerns that abuse may have occurred. DTs and other relevant school staff should seek advice and support from the EA's Intercultural Education Service if necessary. In St. Mary's we strive to create an atmosphere in which pupils with special educational needs which involve communication difficulties, or pupils for whom English is not their first language, feel confident to discuss these issues or other matters that may be worrying them.

- **Gender Identity Issues and Sexual Orientation**

We strive to provide a happy environment where all young people feel safe and secure. All pupils have the right to learn in a safe and secure environment, to be treated with respect and dignity, and not to be treated any less favourably due to their actual or perceived sexual orientation. Please see separate policy - Relationships and Sexuality Education (RSE) within the curriculum.

- **Work Experience, School Trips and Educational Visits**

Our duty to safeguard and promote the welfare of children and young people also includes periods when they are in our care outside of the school setting. We will follow DE and EA guidance on educational visits, school trips and work experience to ensure our current safeguarding policies are adhered to and that appropriate staffing levels are in place.

APPENDIX 4

Signs and Symptoms of Child Abuse

This section contains information for all professionals working with children and families and is not an exhaustive list. The following pages provide guidance only and should not be used as a checklist.

The first indication that a child is being abused may not necessarily be the presence of a severe injury. Concerns may become apparent in a number of ways e.g.

- by bruises or marks on a child's body
- by remarks made by a child, his parents or friends
- by overhearing conversation by the child, or his parents
- by observing that the child is either being made a scapegoat by or has a poor relationship/bond with his parents.
- by a child having sexual knowledge or exhibiting sexualised behaviour which is unusual given his age and/or level of understanding.
- by a child not thriving or developing at a rate which one would expect for his age and stage of development.
- by the observation of a child's behaviour and changes in his behaviour.
- by indications that the family is under stress and needs support in caring for their children.
- by repeat visits to a general practitioner or hospital.

There may be a series of events which in themselves do not necessarily cause concern but are significant, if viewed together. Initially the incident may not seem serious, but it should be remembered that prompt help to a family under stress may prevent minor abuse escalating into something more serious.

It is important to remember that abused children do not necessarily show fear or anxiety and may appear to have established a sound relationship with their abuser(s). Staff should familiarise themselves on 'attachment theory' and its implications for assessing the bond between parents and their children.

Suspicious should be raised by e.g.

- discrepancy between an injury and the explanation
- conflicting explanation, or no explanation, for an injury
- delay in seeking treatment for any health problem
- injuries of different ages
- history of previous concerns or injuries
- faltering growth (failure to thrive)
- parents show little, or no, concern about the child's condition or show little warmth or empathy with the child
- evidence of domestic violence
- parents with mental health difficulties, particularly of a psychotic nature
- evidence of parental substance abuse

Signs and symptoms are indicators and simply highlight the need for further investigation and assessment.

Parental Response to Allegations of Child Abuse Which Raise Concern

Parents' responses to allegations of abuse of their child are very varied. The following types of response are of concern:

- there may be an unequivocal denial of abuse and possible non-compliance with enquiries.
- parents may over-react, either aggressively or defensively, to a suggestion that they may be responsible for harm to their child.
- there may be reluctance to give information, or the explanation given may be incompatible with the harm caused to the child, or explanations may change over time.
- parents may display a lack of awareness that the child has suffered harm, or that their actions, or the actions of others, may have caused harm.
- parents may seek to minimise the severity of the abuse, or not accept that their actions constitute abuse.
- parents may fail to engage with professionals.
- blame or responsibility for the harm may be inappropriately placed on the child or an unnamed third party.
- parents may seek help on matters unrelated to the abuse or its causes (this may be to deflect attention away from the child and his injuries).
- the parents and/or child may go missing.

Physical Abuse

Children receive bumps and bruises as a result of the rough and tumble of normal play. Most children will have bruises or other injuries, therefore, from time to time. These will be accidental and can be easily explained.

It is not necessary to establish intent to cause harm to the child to conclude that the child has been subject to abuse. Physical abuse can occur through acts of both commission and/or omission.

Insignificant but repeated injuries, however minor, may be symptomatic of a family in crisis and, if no action is taken, the child may be further injured. All injuries should be noted and collated in the child's records and analysed to assess if the child requires to be safeguarded.

If on initial examination the injury is not felt to be compatible with the explanation given or suggest abuse it should be discussed with a senior paediatrician.

A small number of children suffer from rare conditions, e.g., haemophilia or brittle bone disease, which makes them susceptible to bruising and fractures. It is important to remain aware, however, that in such children some injuries may have a non-accidental cause. A "clotting screen" only excludes the common conditions which may cause spontaneous bleeding. If the history suggests a bleeding disorder, referral to a haematologist will be required.

Recognition of Physical Abuse

a) Bruises + Soft Tissue Injuries

Common sites for accidental bruising depend on the developmental stage of the child. They include:

- forehead
- crown of head
- bony spinal protuberances
- elbows and below
- hips
- hands
- shins

Less common sites for accidental bruising include:

- Eyes
- Ears
- Cheeks
- Mouth
- Neck
- Shoulders
- Chest
- Upper and Inner Arms
- Stomach
- Genitals
- Upper and Inner Thighs
- Lower Back and Buttocks
- Upper Lip and Frenulum
- Back of the Hands.

Non-accidental bruises may be:

- frequent
- patterned, e.g., finger and thumb marks
- in unusual positions, (note developmental level and activity of the child).

Research on aging of bruises (from photographs) has shown that it is impossible to accurately age bruises although it can be concluded that a bruise with a yellow colour is more than 18

hours old. Tender or swollen bruises are more likely to be fresh. It is not possible to conclude definitely that bruises of different colours were sustained at different times.

The following should give rise to concern e.g.

- bruising in a non-mobile child, in the absence of an adequate explanation,
- bruises other than at the common sites of accidental injury for a child of that developmental stage,
- facial bruising, particularly around the eyes, cheeks, mouth or ears, especially in very young children.
- soft tissue bruising, on e.g., cheeks, arms and inner surface of thighs, with no adequate explanation.
- a torn upper lip frenulum (skin which joins the lip and gum).
- patterned bruising e.g., linear or outline bruising, hand marks (due to grab, slap or pinch may be petechial), strap marks particularly on the buttocks or back.
- ligature marks caused by tying up or strangulation.

Most falls or accidents produce one bruise on a single surface, usually a bony protuberance. A child who falls downstairs would generally only have one or two bruises. Children usually fall forwards and therefore bruising is most usually found on the front of the body. In addition, there may be marks on their hands if they have tried to break their fall.

Bruising may be difficult to see on a dark-skinned child. Mongolian blue spots are natural pigmentation to the skin, which may be mistaken for bruising. These purplish-blue skin markings are most commonly found on the backs of children whose parents are darker skinned.

b) Eye Injuries

Injuries which should give cause for concern:

- black eyes can occur from any direct injury, both accidental and non-accidental. Determining how the injury occurred is vital, therefore; bilateral "black eyes" can occur accidentally as a result of blood tracking from a very hard blow to the central forehead (Injury should be evident on mid-forehead, bridge of nose). It is rare for both eyes to be bruised separately, accidentally however and at the same time.
- sub conjunctival haemorrhage
- retinal haemorrhage.

c) Burns and Scalds

Accidental scalds often:

- are on the upper part of the body

- are on a convex (curved) surface
- are irregular
- are superficial
- leave a recognisable pattern.

It can be difficult to distinguish between accidental and non-accidental burns. Any burn or scald with a clear outline should be regarded with suspicion e.g.

- circular burns
- linear burns
- burns of uniform depth over a large area
- friction burns
- scalds that have a line which could indicate immersion or poured liquid
- splash marks
- old scars indicating previous burns or scalds.

When a child presents with a burn or scald it is important to remember:

- a responsible adult checks the temperature of the bath before a child gets into it.
- a child is unlikely to sit down voluntarily in too hot water and cannot accidentally scald his bottom without also scalding his feet.
- "doughnut" shaped burns to the buttocks often indicate that a child has been held down in hot water, with the buttocks held against the water container e.g., bath, sink etc.
- a child getting into too hot water of its own accord will struggle to get out and there are likely to be splash marks.
- small round burns may be cigarette burns but can often be confused with skin conditions. Where there is doubt, a medical/dermatology opinion should be sought.

d) Fractures

The potential for a fracture should be considered if there is pain, swelling and discoloration over a bone or joint or a child is not using a limb, especially in younger children. The majority of fractures normally cause pain, and it is very difficult for a parent to be unaware that a child has been hurt. In infants, rib and metaphysical limb fractures may produce no detectable ongoing pain, however.

It is very rare for a child aged under one year to sustain a fracture accidentally, but there may be some underlying medical condition, e.g., brittle bone disease, which can cause fractures in babies.

The most common non-accidental fractures are to the long bones in the arms and legs and to the ribs. The following should give cause for concern and further investigation may be necessary:

- any fracture in a child under one year of age
- any skull fracture in children under three years of age
- a history of previous skeletal injuries which may suggest abuse

- skeletal injuries at different stages of healing
- evidence of previous fractures which were left untreated.

e) Scars

Children may have scars from previous injuries. Particular note should be taken if there is a large number of scars of different ages, or of unusual shapes or large scars from burns or lacerations that have not received medical treatment.

f) Bites

Bites are always non-accidental in origin; they can be caused by animals or human beings (adult/child); a dental surgeon with forensic experience may be needed to secure detailed evidence in such cases.

g) Other Types of Physical Injuries

- poisoning, either through acts of omission or commission
- ingestion of other damaging substances, e.g., bleach
- administration of drugs to children where they are not medically indicated or prescribed
- female genital mutilation, which is an offence, regardless of cultural reasons
- unexplained neurological signs and symptoms, e.g., subdural haematoma

h) Fabricated or Induced Illness

Fabricated or induced illness, previously known as Munchausen's Syndrome by Proxy, is a condition where a child suffers harm through the deliberate action of the main carer, in most cases the mother, but which is attributed to another medical cause.

It is important not to confuse this deliberate activity with the behaviour and actions of over-anxious parents who constantly seek advice from doctors, health visitors and other health professionals about their child's wellbeing.

There is a need to exercise caution about attributing a child's illness, in the absence of a medical diagnosis, to deliberate activity on the part of a parent or carer to a fabricated or induced illness, as stated in the Court of Appeal judgement in the case of Angela Cannings.

(R v Cannings (2004) EWCA Criml (19 January 2004)).

The following behaviours exhibited by parents can be associated with fabricated or induced illness:

- deliberately inducing symptoms in children by administering medication or other substances, or by means of intentional suffocation.
- interfering with treatments by over-dosing, not administering them or interfering with medical equipment such as infusion lines or not complying with professional advice, resulting in significant harm.

- claiming the child has symptoms which may be unverifiable unless observed directly, such as pain, frequency of passing urine, vomiting or fits.
- exaggerating symptoms, causing professionals to undertake investigations and treatments which may be invasive, unnecessary and, therefore, are harmful and possibly dangerous.
- obtaining specialist treatments or equipment for children who do not require them.
- alleging psychological illness in a child.

There are a number of presentations in which fabricated or induced illness may be a possibility. These are:

- failure to thrive/growth faltering (sometimes through deliberate withholding of food.)
- fabrication of medical symptoms especially where there is no independent witness
- convulsions.
- pyrexia (high temperature).
- cyanotic episode (reported blue tinge to the skin due to lack of oxygen).
- apnoea (stops breathing).
- allergies
- asthmatic attacks
- unexplained bleeding (especially anal or genital or bleeding from the ears)
- frequent unsubstantiated allegations of sexual abuse, especially when accompanied by demands for medical examinations
- frequent 'accidental' overdoses (especially in very young children).

Concerns may arise when:

- reported symptoms and signs found on examinations are not (3 explained by any medical condition from which the child may be suffering).
- physical examination and results of medical investigations do not explain reported symptoms and signs.
- there is an inexplicably poor response to prescribed medication and other treatment.
- new symptoms are reported on resolution of previous ones.
- reported symptoms and/or clinical signs do not occur when the carers are absent
- over time the child is repeatedly presented to health professionals with a range of signs and symptoms.
- the child's normal, daily life activities are being curtailed beyond that which might be expected for any medical disorder or disability from which the child is known to suffer.

It is important to note that the child may also have an illness that has been diagnosed and needs regular treatment. This may make the diagnosis of fabricated or induced illness difficult, as the presenting symptoms may be similar to those of the diagnosed illness.

Sexual Abuse

Most child victims are sexually abused by someone they know, either a family member or someone well known to them or their family. In recent years there has been an increasing recognition that both male and female children and older children are sexually abused to a greater extent than had previously been realised.

There are no 'typical' sexually abusing families. Children who have been sexually abused are likely to have been put under considerable pressure not to reveal what has been happening to them. Sexual abuse is damaging to children, both in the short and long term.

Both boys and girls of all ages are abused, and the abuse may continue for many years before it is disclosed. Abusers may be both male and female.

It is important to note that children and young people may also abuse other children sexually.

Children disclosing sexual abuse have the right to be listened to and to have their allegations taken seriously. Research shows it is rare for children to invent allegations of sexual abuse and that in fact they are more likely to claim they are not being abused when they are.

It is important that the indicators listed below are assessed in terms of significance and in the context of the child's life, before concluding that the child is, or has been, sexually abused.

Some indicators take on a greater, or lesser, importance depending upon the child's age.

Recognition of Sexual Abuse

Sexual abuse often presents in an obscure way. Whilst some child victims have obvious genital injuries, a sexually transmitted infection or are pregnant, relatively few children are so easily diagnosed. The majority of children subjected to sexual abuse, even when penetration has occurred, have on medical examination no evidence of the abuse having occurred.

The following indicators of sexual abuse may be observed in a child. There may be occasions when no symptoms are present, but it is still thought that a child may be, or has been, sexually abused. Suspicions increase where several features are present together.

The following list is not exhaustive and should not be used as a check list.

The Adolescent

- recurrent urinary tract infections.
- sexually transmitted infections.

Possible behavioural indicators include:

- repeated running away from home
- sleep problems - insomnia, recurrent nightmares, fear of going to bed or overdressing for bed
- dependence on alcohol or drug
- suicide attempts and self-mutilation
- hysterical behaviour, depression, withdrawal, mood swings;
- vulnerability to sexual and emotional exploitation, fear of intimate relationships, promiscuity
- eating disorders — e.g., anorexia nervosa and bulimia
- low self-esteem and low expectation of others
- persistent stealing and /or lying
- sudden school problems - taunting, lack of concentration, falling standard or work etc.
- fear or abhorrence of one particular individual.

Emotional Abuse

Emotional abuse is as damaging as other, visible, forms of abuse in terms of its impact on the child. There is increasing evidence of the adverse long-term consequences for children's development where they have been subject to emotional abuse. Emotional abuse has an impact on a child's physical health, mental health, behaviour and self-esteem. It can be particularly damaging for children aged 0 to 3 years.

Emotional abuse may take the form of under-protection, and/or over-protection, of the child, which has a significant negative impact on a child's development.

The parents' physical care of the child, and his environment, may appear to meet the child's needs, but it is important to remain aware of the interactions and relationship which occur between the child and his parents to determine if they are nurturing and appropriate.

An emotionally abused child may be subject to constant criticism and being made a scapegoat, the continuous withholding of approval and affection, severe discipline or a total lack of appropriate boundaries and control. A child may be used to fulfil a parent's emotional needs.

The potential of emotional abuse should always be considered in referrals where instances of domestic violence have been reported.

Recognition of Emotional Abuse

Whilst emotional abuse can occur in the absence of other types of abuse, it is important to recognise that it does often co-exist with them, to a greater or lesser extent.

Child Behaviours associated with Emotional Abuse

Some of the symptoms and signs seen in children who are emotionally abused are presented below. It is the degree and persistence of such symptoms that should result in the consideration of emotional abuse as a possibility. Importantly, it should be remembered that whilst these symptoms may suggest emotional abuse, they are not necessarily pathognomic of this since they often can be seen in other conditions.

Possible behaviours that may indicate emotional abuse include:

- serious emotional reactions, characterised by withdrawal, anxiety, social and home fears etc.
- marked behavioural and conduct difficulties, e.g., opposition and aggression, stealing, running away, promiscuity, lying.
- persistent relationship difficulties, e.g., extreme clinginess, intense separation reaction.
- physical problems such as repeated illnesses, severe eating problems, severe toileting problem.
- extremes of self-stimulatory behaviours, e.g., head banging, comfort seeking, masturbation etc.
- very low self-esteem, often unable to accept praise or to trust and lack of self-pride.
- lack of any sense of pleasure in achievement, over-serious or apathetic.
- over anxiety, e.g., constantly checking or overanxious to please.
- developmental delay in young children, and failure to reach potential in learning.

Parental Behaviour Associated with Emotional Abuse

Behaviour shown by parents which, if persistent, may indicate emotionally abusive behaviour includes:

- extreme emotions and behaviours towards their child including criticism, negativity, rejecting attitudes, hostility etc.
- fostering extreme dependency in the child
- harsh disciplining, inconsistent disciplining and the use of emotional sanctions such as withdrawal of love
- expectations and demands which are not appropriate for the developmental stage of the child, e.g., too high or too low
- exposure of the child to family violence and abuse
- inconsistent and unpredictable responses to the child
- contradictory, confusing or misleading messages in communicating with the child

- serious physical or psychiatric illness of a parent where the emotional needs of the child are not capable of being considered and/or appropriately met
- induction of the child into bizarre parental belief systems
- break-down in parental relationship with chronic, bitter conflict over contact or residence arrangements for the child
- major and repeated familial change, e.g., separations and reconstitution of families and/or changes of address
- making a child a scapegoat within the family

Neglect

Neglect and failure to thrive/growth faltering for non-organic reasons requires medical diagnosis. Non-organic failure to thrive is where there is a poor growth for which no medical cause is found, especially when there is a dramatic improvement in growth on a nutritional diet away from the parent's care. Failure to thrive tends to be associated with young children but neglect can also cause difficulties for older children.

There is a tendency to associate neglect with poverty and social disadvantage. Persistent neglect over long periods of time is likely to have causes other than poverty, however. There must be a distinction made between financial poverty and emotional poverty.

There are several types of neglect that can occur separately or together, for example:

- medical neglect
- educational neglect
- simulative neglect environmental neglect
- environmental neglect
- failure to provide adequate supervision and a safe environment.

Recognition of Neglect

Neglect is a chronic, persistent problem. The concerns about the parents not providing "good enough" care for their child will develop over time. It is the accumulation of such concerns which will trigger the need to invoke the Child Protection Process. In cases of neglect, it is important that details about the standard of care of the child are recorded and there is regular inter-agency sharing of this information.

It is important to remember that the degree of neglect can fluctuate, sometimes rapidly, therefore ongoing inter-agency assessment and monitoring is essential.

The assessment of neglect should take account of the child's age and stage of development, whether the neglect is severe in nature and whether it is resulting in, or likely to result in, significant impairment to the child's health and development.

The following areas should be considered when assessing whether the quality of care a child receives constitutes neglect.

Child

Health presentation indicators include:

- non-organic failure to thrive (growth faltering)
- poor weight gain (improvement when away from the care of the parents)
- poor height gain
- unmet medical needs
- untreated head lice/other infestations
- frequent attendance at 'accident and emergency' and/or frequent hospital admissions
- tired or depressed child, including a child who is anaemic or has rickets
- poor hygiene
- poor or inappropriate clothing for the time of year
- abnormal eating behaviour (bingeing or hoarding).

Emotional and behavioural development indicators include:

- developmental delay/special needs
- presents as being under-stimulated
- abnormal reaction to separation/ or attachment, disorder
- over-active and/or aggressive
- soiling and/or wetting
- repeated running away from home
- substance misuse
- offending behaviour, including stealing food
- teenage pregnancy.

Family and social relationship indicators include:

- high criticism/low warmth
- excluded by family
- sibling violence
- isolated child
- attachment disorders and /or seeking comfort from strangers
- left unattended/or to care for other children
- left to wander alone day or night
- constantly late to school/late being collected
- not wanting to go home from school or refusing to go to school
- poor attendance at school/nursery
- frequent name changes and/or change of address or parental figures within the home.
- management of a child with a disability who is not attaining the level of functioning which is commensurate with the disability.

Consideration should be given as to whether a child and adolescent mental health assessment is required. Have all children in the family been seen and their views explored and documented?

Parents

Lack of emotional warmth indicators include:

- unrealistic expectations of child
- inability to consider or put child's needs first
- name calling/degrading remarks
- lack of appropriate affection for the child
- violence within the home from which the child is not shielded
- partner resenting non-biological child and hostile in attitude towards him
- failure to provide basic care for the child.

Lack of stability indicators include:

- frequent changes of partners
- poor family support/inappropriate support
- lack of consistent relationships
- frequent moves of home
- enforced unemployment
- drug, alcohol or substance dependency
- financial pressures/debt
- absence of local support networks, neighbours etc.

Issues relating to providing guidance and setting boundaries indicators include:

- poor boundary setting
- inconsistent attitudes and reactions, especially to child's behaviour
- continuously failing appointments
- refusing offers of help and services
- failure to seek or use advice and/or help offered appropriately
- seeks to mislead professionals by providing inaccurate or confusing information
- failure to provide safe environment.

Social Presentation

- aggressive/threatening behaviour towards professionals and volunteers
- disguised compliance
- IOW self-esteem
- lack of self-care.

Health

- mental ill health
- substance misuse
- learning difficulties
- (post-natal) depression
- history of parental child abuse or poor parenting
- physical health.

Home and Environmental Conditions

The following home and environmental conditions should be considered:

- poor housing conditions
- overcrowding

- lack of water, heating, sanitation
- no access to washing machine
- piles of dirty washing
- little or no adequate clean bedding/furniture
- little or no food in cupboards
- human and/or animal excrement
- uncared for animals
- referrals to environmental health
- unsafe environment
- rural isolation.

Impediments to ongoing assessment and appropriate multidisciplinary support

- failure to see the child
- no ease of access to whole house
- fear of violence and aggression
- failure to seek support and advice or consultation, as appropriate, from line manager
- failure to record concern and initial impact
- inability to retain objectivity
- unwitting collusion with family
- failure to see beyond conditions in the home
- child's view is lost
- geographical stereotyping
- minimising concern
- poor networking amongst professionals
- inability to see what is/is not acceptable
- familiarity breeding contempt; and
- failure to make connections with information available from other services.

(Hammersmith & Fulham Inter-Agency Procedures 2002)

When staff become aware of any of the above features, they should review the case with their line manager.

Children with Disability

In recognising child abuse, all professionals should be aware that children with a disability can be particularly vulnerable to abuse. They may need a high degree of physical care; they may have less access to protection and there may be a reluctance on the part of professionals to consider the possibility of abuse.

Recognition of Abuse of Children with Disability

Recognition of abuse can be difficult in that:

- symptoms and signs may be confused
- the child may not recognise the behaviour as abusive
- the child may have communication difficulties and be unable to disclose abuse

- there may be a dependency on several adults for intimate care
- there is a reluctance to accept that children with disabilities may be abused.

Children with disability will usually display the same symptoms and signs of abuse as other children. These may be incorrectly attributed, however, to the child's disability.

Risk Factors Associated with Child Abuse

Several factors may increase the likelihood of abuse to a child. The following list is not exhaustive and does not preclude the possibility of abuse in families where none of these factors are evident.

Child

- a child's name or sibling's names previously on the Child Protection Register

Parents

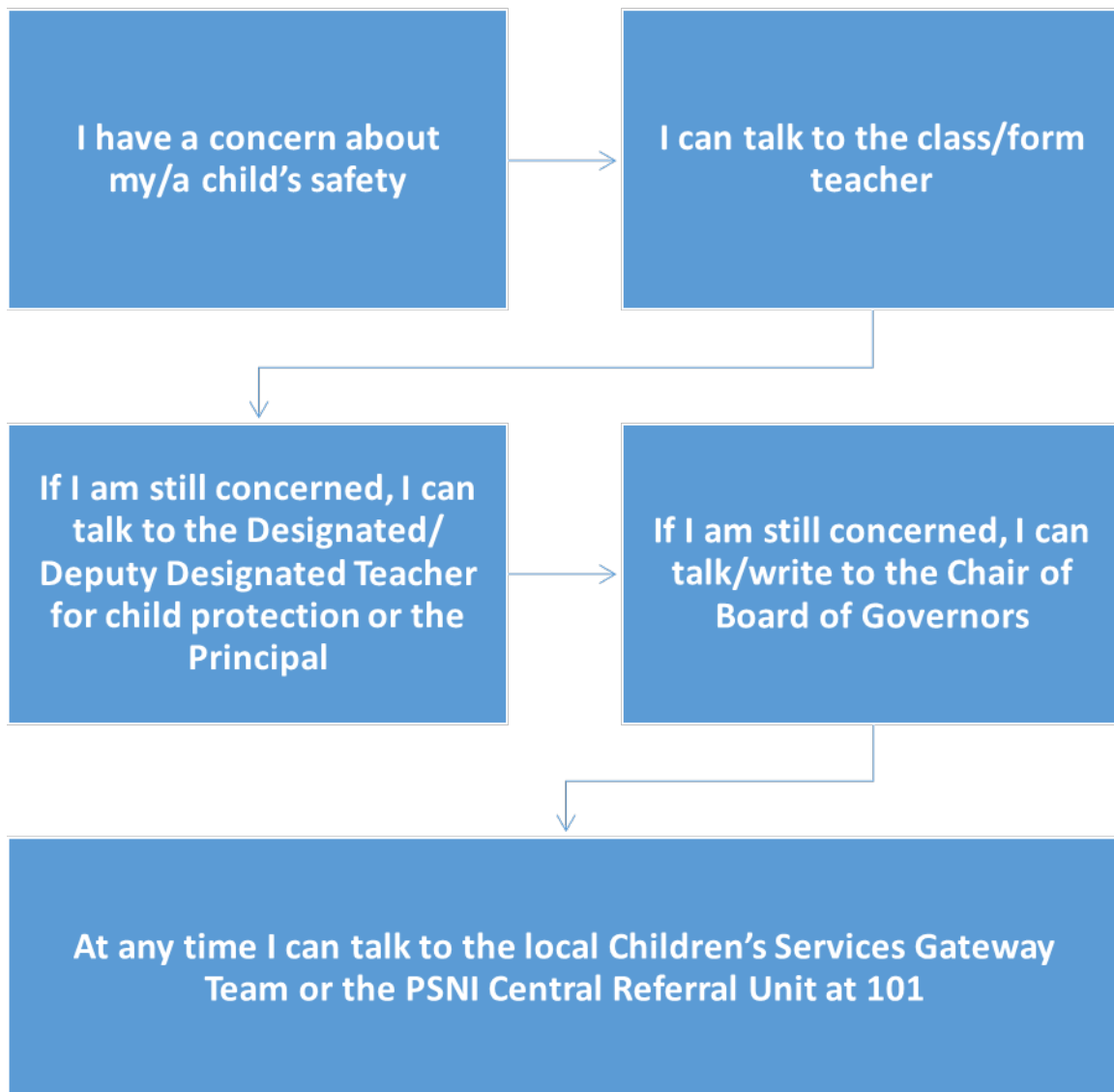
- both young and immature (i.e., aged 20 years and under) at birth of the child
- parental history of deprivation and/or abuse
- slow jealousy and rivalry with the child
- expect the child to meet their needs
- unrealistic expectations/rigid ideas about child development
- history of mental illness in one or both parents
- history of domestic violence
- drug and alcohol misuse in one or both parents of the child
- frequent changes of carers
- history of aggressive behaviour by either parent
- unplanned pregnancy
- unrealistic expectations of themselves as parents.

Home and Environmental Conditions

- unemployment
- no income/poverty
- poor housing or overcrowded housing
- social isolation and no supportive family
- the family moves frequently
- debt
- large family

APPENDIX 5

If a Parent Has a Potential Child Protection Concern Within the School

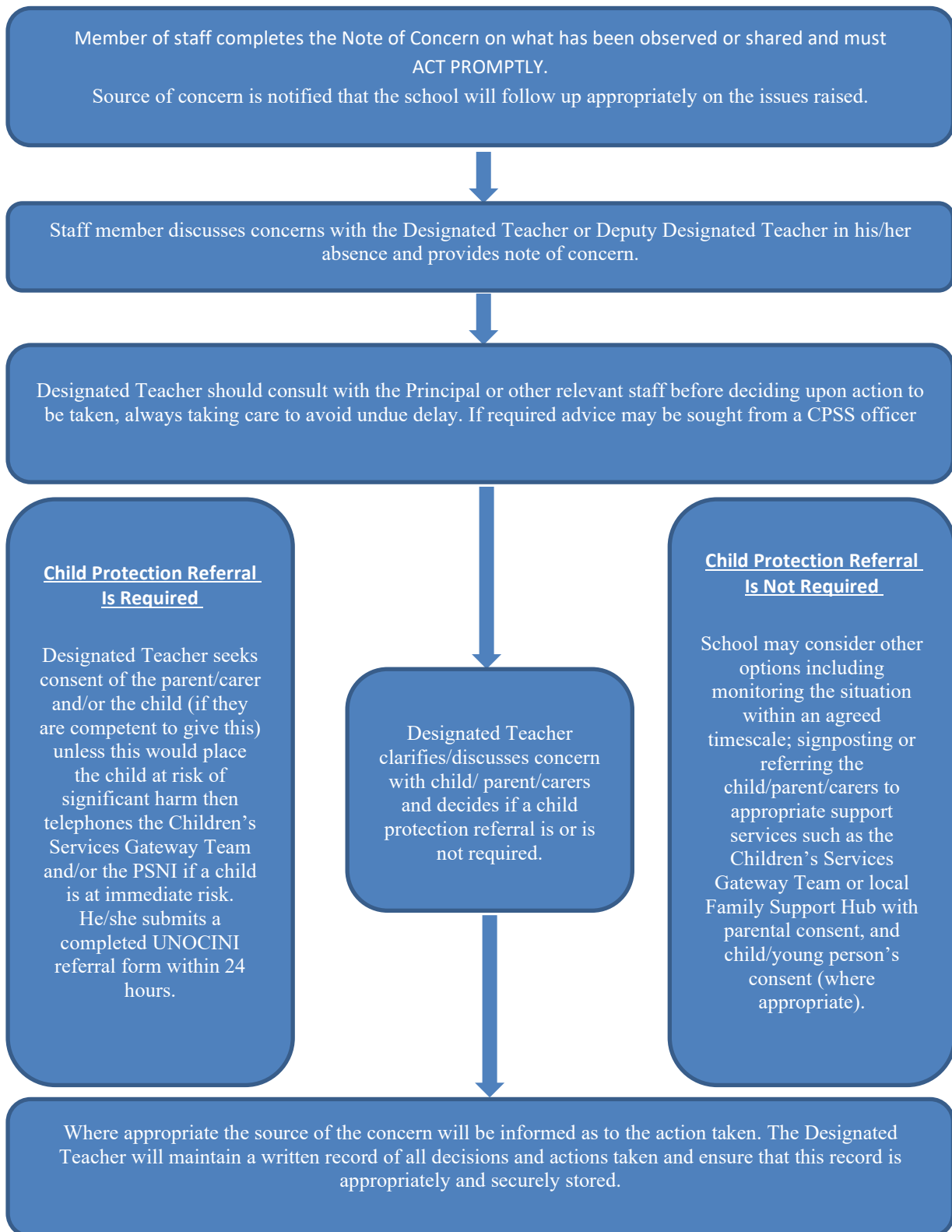


If you have escalated your concern as set out in the above flowchart and are of the view that it has not been addressed satisfactorily, you may revert to the school's complaints policy. This policy should culminate in the option for you to contact the NI Public Services Ombudsman (NIPSO) who has the legislative power to investigate your complaint.

If a parent has a concern about a child's safety or suspect child abuse within the local community, it should be brought directly to the attention of the Children's Services Gateway Team.

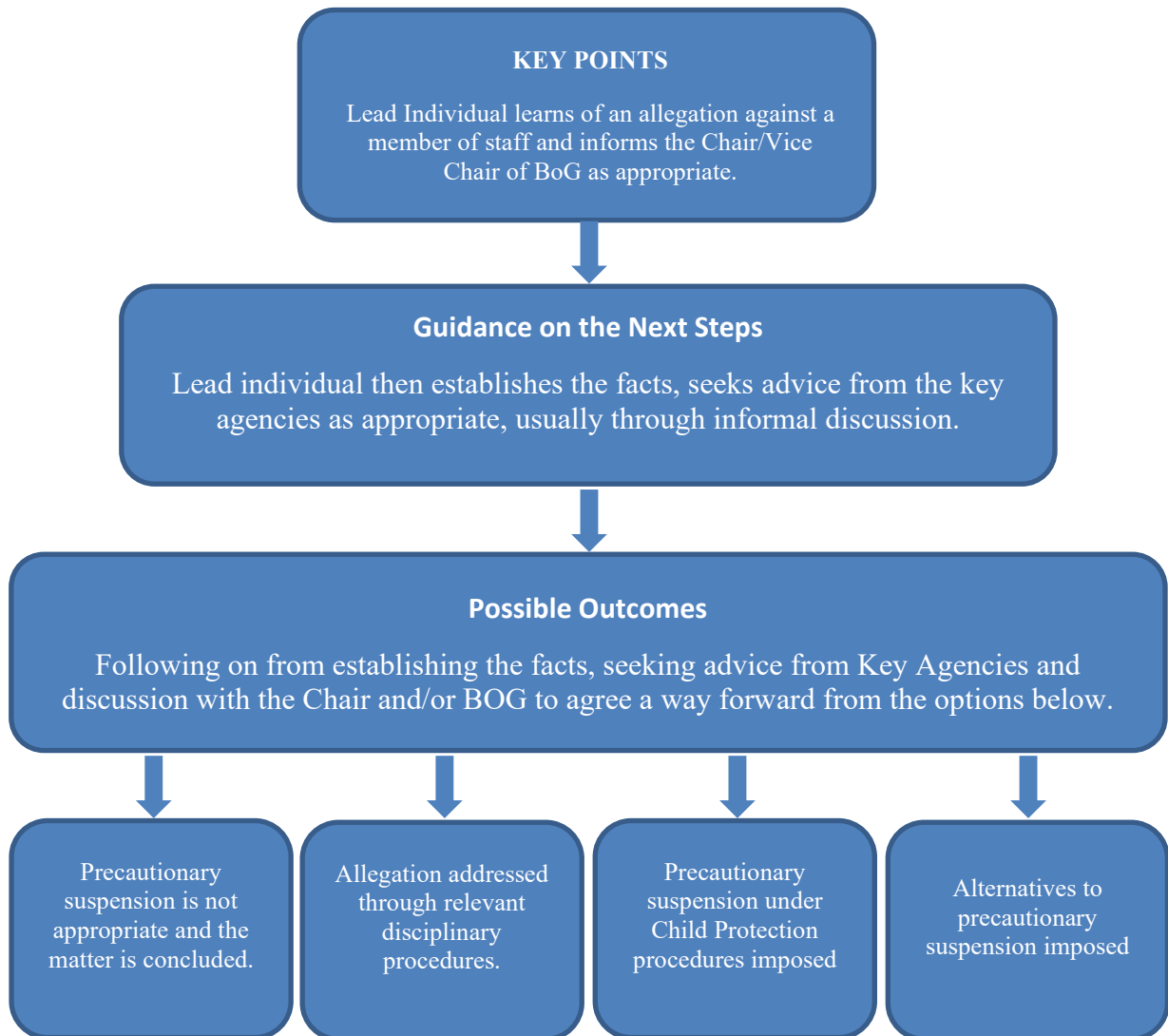
APPENDIX 6

Procedure Where the School Has Concerns, or Has Been Given Information, about Possible Abuse by Someone Other Than a Member of Staff



APPENDIX 7

Dealing with Allegations of Abuse against a Member of Staff



APPENDIX 8

A Code of Conduct for Staff of St. Mary's Grammar School Belfast

Introduction

The protection and promotion of the welfare of children and young people is a responsibility for all members of staff in St. Mary's, teaching and non-teaching. In meeting this, staff should work towards a culture of mutual trust and respect in school through which the best interests of the students entrusted to our care is paramount.

All actions concerning our students must uphold the best interests of the young person as a primary consideration. Staff must always be mindful of the fact that they hold a position of trust, and that their behaviour towards our students in their charge must be above any reproach. This Code of Conduct is not intended to detract from the enriching experiences our students gain from positive interaction with staff. It is intended to assist staff in respect of the complex issue of child abuse, by drawing attention to the areas of risk for staff and by offering guidance on prudent conduct.

Code of Conduct

1. Private Meetings with Pupils

- Staff should be aware of the dangers which may arise from private interviews with individual pupils. It is recognised that there will be occasions when confidential interviews must take place. As far as possible, staff should conduct such interviews in a room with visual access, or with the door open.
- Where such conditions cannot apply, staff are advised to ensure that another adult knows that the interview is taking place. It may be necessary to use a sign indicating that the room is in use, but it is not advisable to use signs prohibiting entry to the room or obscuring windows.
- Where possible another pupil or (preferably) another adult should be present or nearby during the interview.
- Staff should never arrange meeting with individual pupils off school premises unless they have been prior authority to do so by the Principal.

2. Physical Contact with Pupils

- As a general principle, staff are advised not to make unnecessary physical contact with their pupils.
- It is unrealistic and unnecessary, however, to suggest that staff should touch pupils only in emergencies. A distressed child, especially a younger child, may need reassurance involving physical comforting, as a caring parent would provide. Staff should not feel inhibited from providing this.
- However, it is essential that any contact should be appropriate. Ensure that any physical contact, or indeed anything said or implied, cannot be misconstrued as a threat or a sexual overture.
- Physical contact, abusive language or threatening behaviour must not be a part of an overall personal system of discipline.
- Staff should never touch a child who has clearly indicated that he is, or would be, uncomfortable with such contact, unless it is necessary to protect the child, others or

property from harm. **DENI Circular 1999/9, on the use of reasonable force, gives guidance on Article 4 of the Education (Northern Ireland) Order 1998 (Power of member of staff to restrain pupils).**

- Physical punishment is illegal, as is any form of physical response to misbehaviour, unless it is by way of necessary restraint.
- Staff who have to administer first-aid to a pupil should ensure wherever possible that this is done in the presence of other children or another adult. However, no member of staff should hesitate to provide first-aid in an emergency simply because another person is not present.
- Any physical contact which would be likely to be misinterpreted by the pupil, parent or other casual observer should be avoided.
- Following any incident where a member of staff feels that his/her actions have been, or may be, misconstrued, a written report (Note of Concern) of the incident should be submitted immediately to the Designated Teacher.
- Staff should be particularly careful when supervising pupils in a residential setting, or in approved out of school activities, where more informal relationships tend to be usual and where staff may be in proximity to pupils in circumstances very different from the normal school environment.

3. Choice and Use of Teaching Materials

- Teachers should avoid teaching materials, the choice of which might be misinterpreted and reflect upon the motives for the choice.
- When using teaching materials of a sensitive nature a teacher should be aware of the danger that their application, either by pupils or by the teacher, might after the event be criticised.
- If in doubt about the appropriateness of a particular teaching material, the teacher should consult with the **Designated Teacher** before using it.

4. Relationships and Attitudes

Within the Pastoral Care Policies of the school, staff should ensure that their relationships with pupils are appropriate to the age, maturity of the pupils, taking care that their conduct does not give rise to comment or speculation. Attitudes, demeanour and language all require care and thought, particularly when staff is dealing with adolescent boys. The teacher should always use appropriate professional language.

5. Communication with Students/ E. Safety and Internet Use

Teachers should ensure that they do not give students their personal mobile numbers nor should they send personal emails to individual students.

Photographs or videos of students should only be taken for purposes authorised by the school.

6. Setting an Example

All staff and in schools set examples of behaviour and conduct which can be copied by pupils. Staff should therefore, for example, avoid always using inappropriate or offensive language, and demonstrate high standards of conduct in order to encourage our pupils to do the same. All staff should be familiar with all school policies and procedures and to comply with these to set a good example to pupils. Staff must always comply with statutory requirements in relation to such issues as discrimination, health and safety and data protection.

7. Honesty and Integrity

All staff and volunteers are expected to maintain the highest standards of honesty and integrity in their work. This includes the handling and claiming of money and the use of school property and facilities. Staff should be mindful that gifts to individual pupils may be considered inappropriate and could be misinterpreted.

8. Conduct outside Work

Staff should not engage in conduct outside work which could damage the reputation and standing of the school or the staff's own reputation or the reputation of other members of the school community. Staff may undertake work outside school, either paid or voluntary and should ensure it does not affect their work performance in the school.

9. Confidentiality

Staff and volunteers may have access to confidential information about pupils including highly sensitive or private information. It should not be shared with any person other than on a need-to-know basis. In circumstances where the pupil's identity does not need to be disclosed the information should be used anonymously.

There are some circumstances in which a member of staff may be expected to share information about a pupil, for example when abuse is alleged or suspected. In such cases, individuals should pass information on without delay, but only to the safeguarding team, in particular the DT.

If a member of staff is in any doubt about whether to share information or keep it confidential, he or she should seek guidance from the DT. Any media or legal enquiries should be passed to the senior leadership team.

Staff need to be aware that although it is important to listen to and support pupils, they must not promise confidentiality or request pupils to do the same under any circumstances. Additionally, concerns and allegations about adults should be treated as confidential and passed to the Principal or to the Designated Teacher or a member of the safeguarding team without delay.

Conclusion

It would be impossible and inappropriate to lay down hard and fast rules to cover all the circumstances in which staff interrelate with our students, or where opportunities for their conduct to be misconstrued might occur.

In all circumstances, professional judgement of staff will be exercised and for most staff this Code of Conduct will serve only to confirm what has always been their practice. If staff have any doubts about points in this document, or how they should act in particular circumstances, they should consult the Designated Teacher.

From time to time, however, it is prudent for all staff to reappraise their teaching styles, relationships with our students and their manner and approach to individual children, to ensure that they give no grounds for doubt about their intentions, in the minds of colleagues, of children or of their parents/guardians.

APPROVALS	
Principal:	
Chair of the Board of Governors:	
Date of Approval by Governors:	
Date of next annual review:	