



**St Mary's Grammar School Christian
Brothers' Grammar School**

**STUDENT
ATTENDANCE &
PUNCTUALITY
POLICY**

MARCH 2019

ATTENDANCE POLICY

CONTENTS

		Page No
1.	Introduction	3
2.	Types of Absence	4
	2.2 Authorised Absence	4
	2.3 Unauthorised Absence	5
	2.4 Persistent Absence	5
	2.5 Approved Educational Activity	5
3.	Poor Attenders	6
4.	Registers	7
	4.6 Register Codes	8
5.	Promoting School Attendance	9
6.	Lateness	10
7.	Reintegrating Long-Term Absentees	11
8.	Staff Roles	12
	8.1 The Form Tutor	12
	8.2 The Subject Teacher	13
	8.3 The Head of Department	13
	8.4 The Head of Year	13
	8.5 SLT in charge of attendance	14
	8.6 The Principal	14
	Procedures for Improving Attendance	12
9.	Punctuality Policy	13
	Punctuality Letter	14
10.	Attendance Letters	15
11.	Procedural Flow Charts	22

1. INTRODUCTION

- 1.1 Regular and punctual attendance is an essential prerequisite to effective learning. When children are not in school they are deprived of the educational opportunities which school has to offer them and they are at much greater risk of subsequently becoming socially excluded and disadvantaged. Also if they are not in school then they may be at risk - at risk of becoming either the perpetrators or the victims of crime. St Mary's CBGS aims to develop through its ethos the value of good attendance and punctuality, and that we will respond promptly to all instances of non-attendance and lateness.
- 1.2 Levels of attendance are a key indicator of a school's overall performance and St Mary's CBGS sets its annual attendance target as 95%. We are also required not just to improve levels of overall attendance but to reduce the numbers of persistent absentees (a persistent absentee being defined as a child whose attendance rate is below 85%).
- 1.3 St Mary's CBGS wants to encourage and to promote good attendance in as many ways and for as many children as we can. There also needs to be balance between the specific strategies used to address the needs of those children who do - for whatever reason - experience difficulty in attending regularly and the unique circumstances of the child. A whole school approach to attendance will, therefore, focus primarily on promoting attendance but will also address the issue of absenteeism, especially persistent absenteeism, when it occurs. Such an approach will be both proactive and reactive and will combine, in appropriate measure, assistance with insistence.

2. TYPES OF ABSENCE

- 2.1 The parent of a child of compulsory school age is required by law to ensure that the child regularly attends the school at which he/she is registered. Should a parent fail to ensure that his/her child attends that school regularly then the parent is guilty of an offence. When a child of compulsory school age is absent from school, the attendance register must indicate whether the absence is authorised or unauthorised. Should the absence be authorised by the school the parent cannot be convicted.
- 2.2 **Authorised Absence**
- 2.21 Authorised absence is where the school has either given approval in advance for the child to be away or where an explanation offered afterwards has been accepted as satisfactory justification for absence.
- 2.22 Parents may not authorise absence; only schools can do this. Should school staff have reason to doubt that the explanation offered about a particular absence is genuine, this should be referred to the Senior Teacher in charge of Attendance.
- 2.23 Absence may generally be authorised for the following reasons:
- illness, medical or dental appointments;
 - days of religious observance;
 - study leave;
 - exclusion;
 - Traveller child travelling;
 - family bereavement;
 - a child caring for a sick or disabled family member (authorisation should, in such instances, be of limited duration);
 - involvement in a public performance;

- family holidays (when the school has given approval in advance and for no more than 10 days);
- 'special' occasions (the nature of such special occasions will be determined by schools on an individual basis);
- lateness (when the child arrives after the register has closed and offers a satisfactory explanation – see below under Lateness).

2.24 Excessive amounts of authorised absence may often be as damaging to continuity of learning as unauthorised absence; schools therefore should only authorise absence sparingly and only after careful consideration, particularly where children have a history of irregular attendance. Inappropriate authorisation of absence may seriously undermine effective intervention by the Education Welfare Service and compromise any potential legal action.

2.3 **Unauthorised Absence**

2.31 Unauthorised absence is where no explanation has been given for the child's absence or where the explanation offered is considered by the school to be unacceptable.

2.32 Absence should not be authorised in the following circumstances:

- no explanation is offered by the parent/carer;
- the explanation offered is unsatisfactory (eg shopping, minding the house, etc);
- family holidays (which are taken without the school's prior consent or knowledge and/or are in excess of any time agreed by the school);
- lateness when the child arrives after the register has closed and fails to offer a satisfactory explanation; this is often a difficult and potentially contentious issue – see below under Lateness;
- 'special' occasions (when the school does not agree that leave should be given).

2.4 **Persistent Absence**

Persistent absence (or PA) is absence of 20% or more. An individual child is deemed to be a persistent absentee, therefore if his/her attendance is less than 80% (regardless of whether or not the absences have been authorised).

2.5 **Approved Educational Activity**

2.51 Children who are educated off site or dual registered, or who are engaged in supervised educational activities away from school premises, need not be marked as authorised absent, provided that such activities are:

- of an educational nature,
- approved by the school,
- supervised.

2.52 These children may be recorded as on an approved educational activity. This means that for statistical purposes, particular activities (such as approved work experience, field trips and educational visits, approved sporting activities, link courses and study leave) can be counted as statistically 'present'. The nature of the activity must, however, be recorded by use of appropriate code. This is important in order to ensure that an accurate record of those children physically present on site at any given time is instantly available.

3. POOR ATTENDERS

3.1 The following far from exhaustive list identifies those children who may potentially be poor attenders. These categories are not mutually exclusive and many clearly overlap. It is of course not inferred that such children are automatically prone to poor attendance nor does it seek to stigmatise such children in any way. But such a checklist can be a useful tool in helping to identify at an early stage those pupils who may be prone to experience difficulties.

Children:

- whose parents have recently separated;
- who have recently moved into the area;
- who are ‘looked after’;
- who join a school midway through the school year;
- who have caring responsibilities at home;
- who have recently missed a lot of school time through illness;
- whose siblings (and/or parents) have been poor school attenders;
- whose performance/attainment level in school tends to be poor;
- who may be teased or bullied;
- who have difficulty accessing the curriculum;
- who are persistently disruptive;
- who have previously been excluded;
- whose parents are experiencing severe financial hardship (and may not be able to afford bus fare, uniform, etc);
- who are under pressure from examinations.

3.2 It is vital that key staff such as Form Teachers and Year Heads have clear access to information on those aspects of a child’s life (both within and outside of school) which may be relevant to that child’s attendance and behaviour patterns.

4. REGISTERS

4.1 Register Codes

The Register codes are as follows:

- /\ - Present am/pm
- B - Bereavement
- C - Suspended
- E - Educated off site.
- F - Extended family holiday (agreed) - Authorised Absence.
- G - Family holiday (not agreed or days in excess of agreement) - Unauthorised Absence.
- H - Other absence
- I - Illness (not medical/dental appointments) - Authorised Absence.
- J - Extended Leave - For non-national family emergency travel required to their home country
- L - Late (before registers close) - Present.
- M - Medical/Dental appointments - Authorised Absence.
- O - Other Exceptional Circumstance.
- P - Approved Sporting Activity
- R - Religious Observance
- S - Study Leave
- T - Traveller child travelling
- U - Late after registers close without an acceptable explanation - Unauthorised Absence
- V - Educational visit or trip
- W - Work Experience - Approved Educational Activity.

4.2 Schools are required by law to call attendance registers twice daily - once at the start of the morning session and at some stage during the afternoon session. The Form Register is of paramount importance and are legal documents. Should the parents of a persistent non-attender be prosecuted, then the information which the register contains will be the main source of evidence presented to the court.

4.3 While there is a statutory requirement to complete registers - and to keep them for a period of not less than 3 years - there is another side to the matter which should not be overlooked. The daily requirement to register children can and should be perceived as an opportunity for the school to receive children formally from home and serve as an introduction to the school session.

4.4 St Mary's CBGS's practice is a ten-minute session in the morning with the Form Teacher and in the afternoon during period 6, when the roll is called by the class teacher. Registration is important for all involved, allowing for a degree of familiarity between Form Teacher and Form Class, and for the daily implementation of pastoral and tutorial matters - not only influence the maintenance of an accurate attendance record but also help to foster habits of good attendance. It is vital that children are continually reminded that the school takes all matters of attendance and punctuality very seriously.

4.5 St Mary's CBGS's policy with regard to registration will be regularly communicated to parents. Parents need to be made aware and reminded of the school's expectations with regard to the times when registers open/close, procedures to be followed in the case of lateness, details of any practice regarding phone-calls/notes explaining absences, etc.

4.6 A collection of accurate and well-maintained registers provides an on-going and immediately relevant and accessible database on the basis of which informed debate and strategic planning about attendance matters can take place. Such registers are the basic tools with which our

school and its Education Welfare Officer can early begin to identify and target individual pupils who are beginning to experience attendance difficulties, and the importance which a school attaches to its registers can be used to remind children, parents, governors and staff that the school regards good attendance as one of its top priorities.

5. PROMOTING GOOD SCHOOL ATTENDANCE

5.1 Our school with its positive ethos will continuously highlight and promote good attendance. A system of rewards and/or incentives can show the whole school community how highly attendance is valued and can demonstrate to children and their families that the school values and appreciates their efforts. Promoting good school attendance should be the responsibility of not just the school's pastoral staff but of the whole staff team.

5.2 Excellent/improved attendance might be acknowledged by:

- letters to parents;
- certificates;
- photo-displays featuring named pupils;
- references in school newsletters/bulletins;
- stickers in homework diaries;
- regular features/presentations on an attendance notice board;
- presentations at assemblies, parents' evenings, etc;
- linking attendance to a school's merit/credit system;
- personal congratulations from senior staff.
- House points

5.3 Who to Acknowledge:

- 100% attenders and other excellent attenders (over a term, a year);
- consistently good attenders;
- poor attenders who show a marked/any improvement;
- form or year groups with consistently good attendance;
- form or year groups who show a marked improvement;
- year 8 pupils who begin their secondary career with a good attendance record;
- the whole school

6. LATENESS

REPEATED LATENESS AT THE BEGINNING OF A SCHOOL SESSION CAN AMOUNT TO FAILURE TO ATTEND REGULARLY.

6.1 Registration of Rolls is at 9.00 am.

6.2 St Mary's CBGS has a clear and consistent policy and practice for promoting punctuality and addressing all forms of lateness. This policy is rigorous and transparent. In particular and exceptional circumstances, we may wish to extend the period during which registers are kept open - eg in severe weather conditions or when there are unavoidable problems with local transport.

6.2 In addressing lateness St Mary's:

- has a clearly-defined and consistently applied policy. (This is precise in terms of the times when registers will close and any sanctions which may need to be applied.)
- publicises this policy in school and communicate it to parents;
- balances any sanctions with positive encouragement;
- ensures that class teachers/year heads apply any lateness sanctions fairly and consistently;
- praises and acknowledge punctuality;
- praises and acknowledge latecomers who improve;
- ensures that teachers set a good example by arriving punctually for registration and for lessons;
- follows up the reasons for lateness and be alert to any emerging patterns or problems;
- sets in place systems for effectively monitoring lateness – (latecomers should sign a late-slip or a late-book (and give a reason/explanation for their lateness) and this late-book should be regularly monitored);
- does not cover for lateness (if a child is absent when the register closes he/she should be marked absent - to leave a gap in the register and then to mark a child down as present when/if he/she eventually arrives is to disguise any difficulty which that child may be experiencing and to delay support which might be offered).
- educates parents and pupils that the responsibility for punctuality is theirs.

7. RE-INTEGRATING LONG-TERM ABSENTEES

7.1 A number of children miss long periods of school through sickness, exclusion, school refusal/phobia, etc - and may feel especially vulnerable when they do eventually return. It is vital therefore to make the transition back to full-time schooling as smooth and untraumatic as possible. Form Teacher can consult with SLT for School Community for advice.

7.2 Ideally the return of the long-term absentee needs to be carefully planned in advance, preferably with all parties concerned - child, parents, teacher and Education Welfare Officer agreeing to a written programme or plan. Engagement with the tutor team and management of Belfast Hospital School may also be appropriate.

- 7.3 To ease the return of the long-term absentee St Mary's may need to:
- nominate a key person to co-ordinate, monitor and review the child's return – as organized by SLT in charge of Attendance;
 - ensure that all staff are aware of and alert to the situation;
 - consider the possible need for a phased or gradual return;
 - consider the timetable and determine what is immediately possible and manageable for the child;
 - consider whether extra classroom support (from the Special Needs or Learning Support Department) is appropriate;
 - ensure that any re-introductory programme/timetable is flexible;
 - consider the need to allocate another child as a “mentor”/”buddy” to the returner;
 - ensure that the child knows what is expected of him.
- 7.4 ALWAYS ENSURE THAT THE SCHOOL KEEPS IN TOUCH WITH ANY CHILD WHO IS ABSENT FOR LONG PERIODS. (The child and his family still need to feel part of the school community throughout the period of absence.)
- 7.5 ALWAYS MAKE THE CHILD FEEL WELCOMED BACK (even if his past behaviour has been difficult).
- 7.6 NEVER MAKE SARCASTIC COMMENTS (a casual, 'Nice of you to turn up' or 'Had a nice holiday?' can in a moment destroy hours of careful preparation).
- 7.7 ALWAYS ENSURE THAT THE CHILD HAS SOMEONE TO GO TO IF HE BEGINS TO FIND THE SITUATION DIFFICULT - as arranged by SLT for School Community.
- 7.8 Children returning after a long absence cannot perform miracles - renewing or remaking friendships, catching up in the classroom, readjusting to a structured day - all take time and do not happen overnight. But throughout the process children must feel that THE SCHOOL IS GLAD TO SEE THEM AND VALUES THEIR RETURN.

8. STAFF ROLES

8.1 The Form Tutor

- is the key person in the school's pastoral care system;
- promotes habits of regular attendance and punctuality both with individuals and with the form group;
- accurately maintains registers and responds to parental notes and unexplained absences;
- is alert to absence being condoned for trivial or spurious reasons;
- is alert to emerging patterns of absence and lateness;

- is aware of and consistent in applying school systems for monitoring and promoting attendance;
- requests the support/intervention of the Year Head when appropriate;
- Completes the monthly attendance audit forwarded by SLT and returns to HoY and SLT member with responsibility for attendance.

8.2 **The Subject Teacher**

- sets an example of punctuality by arriving for lessons on time;
- keeps an accurate register of attendance in each lesson and promptly feeds back absences to Form Teachers and/or Year Heads;
- deals with lateness to lessons consistently and promptly (action taken immediately is often more effective than a detention at a later date);
- recognises that learning difficulties are an important factor in poor attendance;
- explores methods of making specific provision for children who are frequent or long-term absentees;
- welcomes and values the presence of all children in his/her lessons.

8.3 **The Head of Department**

- examines the curriculum in order to develop ways of improving the quality of the classroom experience;
- develops sensitive and effective departmental re-entry strategies which welcome children back from a period of absence and offers support in the organisation of missed work;
- regularly liaises with Form Tutors and Year Heads on attendance related matters.

8.4 **The Head of Year**

- assumes a key role in co-ordinating all aspects of attendance related matters;
- ensures that registers are properly maintained and that absences are appropriately followed up;
- generally monitors and supervises the work of Form Teachers in promoting attendance;
- effectively liaises with other senior staff on attendance related matters/audits etc;
- ensures that up-to-date attendance data is regularly available;
- when necessary communicates with and meets parents of children experiencing attendance difficulties;

8.5 **SLT in charge of Attendance**

- ensures that a whole-school attendance policy is implemented (and regularly reviewed);
- Carries out a monthly audit of attendance and requests completion of the pro-forma;
- Liaises closely with and regularly meets the school appointed Education & Welfare Officer (EWO);
- ensures that this policy is communicated to pupils, staff and parents;
- ensures that ensures that detailed attendance data is regularly collected and used to inform strategic planning on attendance matters;
- ensures that the set whole-school attendance targets are achieved, through monitoring of attendance data and feedback from Year Heads;
- reports to SLT on attendance matters;
- promotes a school ethos which values and promotes excellent levels of attendance and punctuality.

8.6 **The Principal** (through their Senior Leadership Team)

- ensures that a whole-school attendance policy is implemented (and regularly reviewed);
- ensures that this policy is communicated to children, staff, parents and governors;
- ensures that detailed attendance data is regularly collected and used to inform strategic planning on attendance matters;
- ensures that whole-school attendance targets are set and achieved;
- reports to governors on attendance matters;
- creates a school ethos which values and promotes excellent levels of attendance and punctuality.

Procedures for Improving Attendance

Aim: To promote positive attitudes of behaviour and attendance by creating a warm, welcoming and secure atmosphere where pupils are valued.

Shared Responsibility of Parent and School

School: The school offers to parents and pupils a safe, secure environment where attendance is monitored effectively and support is provided where necessary. Statutory Attendance Target is 95%

Parents have a statutory obligation, (The Children (NI) Order 1995) to ensure their child attends school regularly.

Contact in case of absence

First Day: Parent contacts school with a reason for absence, the School Receptionist will record the reason and expected return in the Pupils' Absence Log.

Return to School: Parents to send in a letter explaining absence, a medical certificate if required for lengthy absences.

School Procedures for following up absences

Daily:

Form Teacher: monitor punctuality and attendance within the form class. Contact parents with any concerns.

Head of Year: monitor absences within the year group.

Weekly:

Form Teacher: Review Absences printout and contact parents with any concerns.

- If an absentee returns with no note/letter, the Form Teacher gives the pupil a pro forma to be returned the next day, on which the parent/guardian gives an explanation for the absence. This form is retained by the Form Teacher.
- If a pupil fails to return with this pro forma, the pupil is sent to his Head of Year for a different pro forma (different colour). This form will explain the process of referral to the Education Welfare Service (EWS).
- If a pupil fails to return this form, the pupil will receive a final pro forma from SLT with responsibility for Attendance, this will inform parents that all reasonable requests to explain absence have failed and that a referral to EWS is imminent.

If a pupil's attendance falls below 85% they will be referred to EWS immediately, if there has been any break down in home-school communication on attendance issues.

Monthly:

SLT Attendance Member: Monitor monthly attendance patterns and ensure completion of the audit Liaise with FT/HoY/HoS/Parents/External Agencies as required.

Punctuality Policy

The school wishes to develop in our students an awareness of self-discipline, part of which is the importance of punctuality, not only while at school, but later in the work place. We acknowledge our role in developing and encouraging this trait in our students and actively seek the co-operation of parents/guardians in this task. To facilitate and to enhance this process we will undertake the following procedures:

- a) Identify students with a poor punctuality record, i.e. not in registration by 9.00am, through Attendance Registers.
- b) Inform parents of their children's record in this matter in the *expectation of parental support*.
- c) Raise awareness amongst our students of the importance of punctuality.
- d) Provide incentives to encourage the "good habits" of punctuality.

Punctuality Procedures

Any pupil who is late for school i.e. arrives after the 9.00 am bell must register in the Lunchroom up until 10.30 am. Anyone late after this time must register in the main office.

If a student is late 3 times in one calendar month, he is assigned to after school detention. Whenever a student is required to do after school detention his parents will be informed. Further sanctions are outlined below:

1. Initial 3 lates After School Detention
2. Further 3 lates 2 x After School Detention
3. Further 3 lates Staff Day Detention (9am-12pm)
4. Further 3 lates Saturday Detention (9am-12pm)
5. Further 3 lates 1 Day Suspension (Followed by HoY return to school parental interview)

St. Mary's Christian Brothers' Grammar School

147a Glen Road

Belfast

BT11 8NR

Phone: (028) 9029 4000

Fax.: (028) 9029 4009



Date

Dear Parent(s)/Guardian(s)

Name of Pupil: _____ Class: _____

As your son's Form Teacher, I would like to express some concern regarding his punctuality to school. Our policy on punctuality insists that punctuality is monitored regularly. During the past calendar month he has been late for morning registration on 3 occasions. This letter is informing you that he has been put on the After School Detention list and will be on Detention on:

Detention is from 3.30 to 4.45 pm.

Yours faithfully

Form Teacher



St. Mary's Christian Brothers' Grammar School
Scoil Mhuire na mBráithre Críostaí



147a Glen Road, Belfast, BT11 8NR 147a Bóthar an Ghleanna, Béal Feirste, BT11 8NR
Telephone: (028) 9029 4000 Fax.: (028) 9029 4009
Website: www.stmaryscbgs.com

'Nurturing faith, promoting partnership, excelling in teaching and learning, creating a caring school community and inspiring transformational leadership.'

Dear Parent/Guardian

I understand that there may be some occasions when it is not possible for your son to attend school but **details of any absence must be reported to me, as your son's Form Teacher, by letter, on the day of his return.**

Failure to do this promptly may result in your son's absence being recorded as unapproved and the setting of an after school detention. Whilst we appreciate a phone call explanation for your son's absence this does not replace the legal requirement of a parental explanation note.

Your son has been absent recently but we have not yet received any written explanation from you. It is vital that you submit an explanation otherwise we will need to take this further.

<p>Pupil Name: _____ Form Class: _____</p> <p>Date of absence: _____</p> <p>Parental Explanation:</p> <p>Parental Signature: _____ Date: _____</p>

This explanation letter will be kept in your son's attendance folder and I thank you for your co-operation in this matter.

Yours faithfully

Form Teacher



St. Mary's Christian Brothers' Grammar School
Scoil Mhuire na mBráithre Críostaí



147a Glen Road, Belfast, BT11 8NR 147a Bóthar an Ghleanna, Béal Feirste, BT11 8NR
Telephone: (028) 9029 4000 Fax.: (028) 9029 4009
Website: www.stmaryscbgs.com

'Nurturing faith, promoting partnership, excelling in teaching and learning, creating a caring school community and inspiring transformational leadership.'

Date:

Dear Parent/Guardian

The minimum expected attendance level for every St Mary's student is 95%. Educational research clearly links high levels of school attendance with improved academic achievement. It is vital therefore that every pupil attends regularly.

Unfortunately your son's attendance has already fallen to a level which is of very serious concern to the school and the Educational Welfare Officer (EWO).

Whilst I understand that there may be very legitimate reasons for this absence, it is essential that you ensure that your son's attendance improves with immediate effect. I have already met with the EWO to discuss his current level of absence and will be obliged to refer your son officially should this not improve.

Yours faithfully

Senior Teacher (Attendance)



St. Mary's Christian Brothers' Grammar School
Scoil Mhuire na mBráithre Críostaí



147a Glen Road, Belfast, BT11 8NR 147a Bóthar an Ghleanna, Béal Feirste, BT11 8NR
Telephone: (028) 9029 4000 Fax.: (028) 9029 4009
Website: www.stmaryscbgs.com

'Nurturing faith, promoting partnership, excelling in teaching and learning, creating a caring school community and inspiring transformational leadership.'

Date:

Dear Parent/Guardian

The minimum expected attendance level for every St Mary's student is 95%. Educational research clearly links high levels of school attendance with improved academic achievement. It is vital therefore that every pupil attends regularly.

Unfortunately your son's attendance has now fallen below 90%.

In previous correspondence your son's Form Teacher explained that failure to improve attendance would result in further intervention. As Year Head it is now necessary for me to arrange for a short interview at a time of your convenience. This meeting will allow us to discuss attendance issues and identify strategies for improvement. Ongoing special circumstances which may have resulted in this attendance drop can also be addressed at this interview. I will be in touch soon to arrange this meeting. I would ask that you ensure your son's improved attendance with immediate effect - He should only miss school in the most serious of circumstances. If school intervention and support does not result in the necessary improvement in your son's attendance then it may be necessary to involve outside agencies.

Yours faithfully

Head of Year



St. Mary's Christian Brothers' Grammar School
Scoil Mhuire na mBráithre Críostaí



147a Glen Road, Belfast, BT11 8NR 147a Bóthar an Ghleanna, Béal Feirste, BT11 8NR
Telephone: (028) 9029 4000 Fax.: (028) 9029 4009
Website: www.stmaryscbgs.com

'Nurturing faith, promoting partnership, excelling in teaching and learning, creating a caring school community and inspiring transformational leadership.'

Date:

Dear Parent/Guardian

The minimum expected attendance level for every St Mary's student is 95%. Educational research clearly links high levels of school attendance with improved academic achievement. It is vital therefore that every pupil attends regularly. Every month St Mary's audits the pupil attendance figures and this data has identified some concerns. Your son's attendance:

Has now fallen below the 95% school requirement / Continues to sit below the 95% school requirement

I would ask that you ensure his attendance improves with immediate effect and that he only misses school in the most serious of circumstances.

Failure to improve attendance will result in further intervention by the Year Head however, if there are ongoing special circumstances which may have resulted in this attendance drop, please do not hesitate to contact me to discuss this.

I would ask you to sign and return this letter to me as acknowledgment that you have received it.

Yours faithfully

Form Teacher

Pupil Name: _____ Form Class: _____

Actual Attendance _____ % for month of _____

Parental Signature: _____ Date: _____



St. Mary's Christian Brothers' Grammar School
Scoil Mhuire na mBráithre Críostaí



147a Glen Road, Belfast, BT11 8NR 147a Bóthar an Ghleanna, Béal Feirste, BT11 8NR
Telephone: (028) 9029 4000 Fax.: (028) 9029 4009
Website: www.stmaryscbgs.com

'Nurturing faith, promoting partnership, excelling in teaching and learning, creating a caring school community and inspiring transformational leadership.'

DATE

Dear Parent/Guardian

The minimum expected attendance level for every St Mary's student is 95%. Educational research clearly links high levels of school attendance with improved academic achievement. It is vital therefore that every pupil attends regularly.

Unfortunately your son's attendance has now fallen close to the 85% automatic referral to the Education & Welfare Office.

Your son's Form Teacher and Year Head have been working to address and improve this level of attendance. Unfortunately this has not resulted in the improvement we had hoped for. It is essential that you ensure your son's attendance improves with immediate effect to avoid the involvement of the Education and Welfare Officer.

Yours faithfully

Senior Teacher



St. Mary's Christian Brothers' Grammar School
Scoil Mhuire na mBráithre Críostaí



147a Glen Road, Belfast, BT11 8NR 147a Bóthar an Ghleanna, Béal Feirste, BT11 8NR
Telephone: (028) 9029 4000 Fax.: (028) 9029 4009
Website: www.stmaryscbgs.com

'Nurturing faith, promoting partnership, excelling in teaching and learning, creating a caring school community and inspiring transformational leadership.'

DATE

Dear Parent/Guardian

The minimum expected attendance level for every St Mary's student is 95%. Educational research clearly links high levels of school attendance with improved academic achievement. It is vital therefore that every pupil attends regularly.

Unfortunately your son's attendance was of serious concern last academic year and will be closely monitored over the coming months.

Whilst I understand that there may be very legitimate reasons for this absence, it is essential that you ensure that your son's attendance improves with immediate effect this school year. The Head of Year and Head of School are aware of these major attendance concerns and have worked with your son to address this. Failure to improve this level of absenteeism will potentially affect your son's academic performance and may require the intervention of the Education & Welfare Office. All instances of absence should be reported to the Form Teacher in writing on the day of your son's return to school.

I appreciate your support and co-operation in this matter as we work together to ensure the best education for your son this year.

Yours faithfully

Mrs Siobhan Kelly
Principal



St. Mary's Christian Brothers' Grammar School
Scoil Mhuire na mBráithre Críostaí



147a Glen Road, Belfast, BT11 8NR 147a Bóthar an Ghleanna, Béal Feirste, BT11 8NR
Telephone: (028) 9029 4000 Fax.: (028) 9029 4009
Website: www.stmaryscbgs.com

'Nurturing faith, promoting partnership, excelling in teaching and learning, creating a caring school community and inspiring transformational leadership.'

DATE

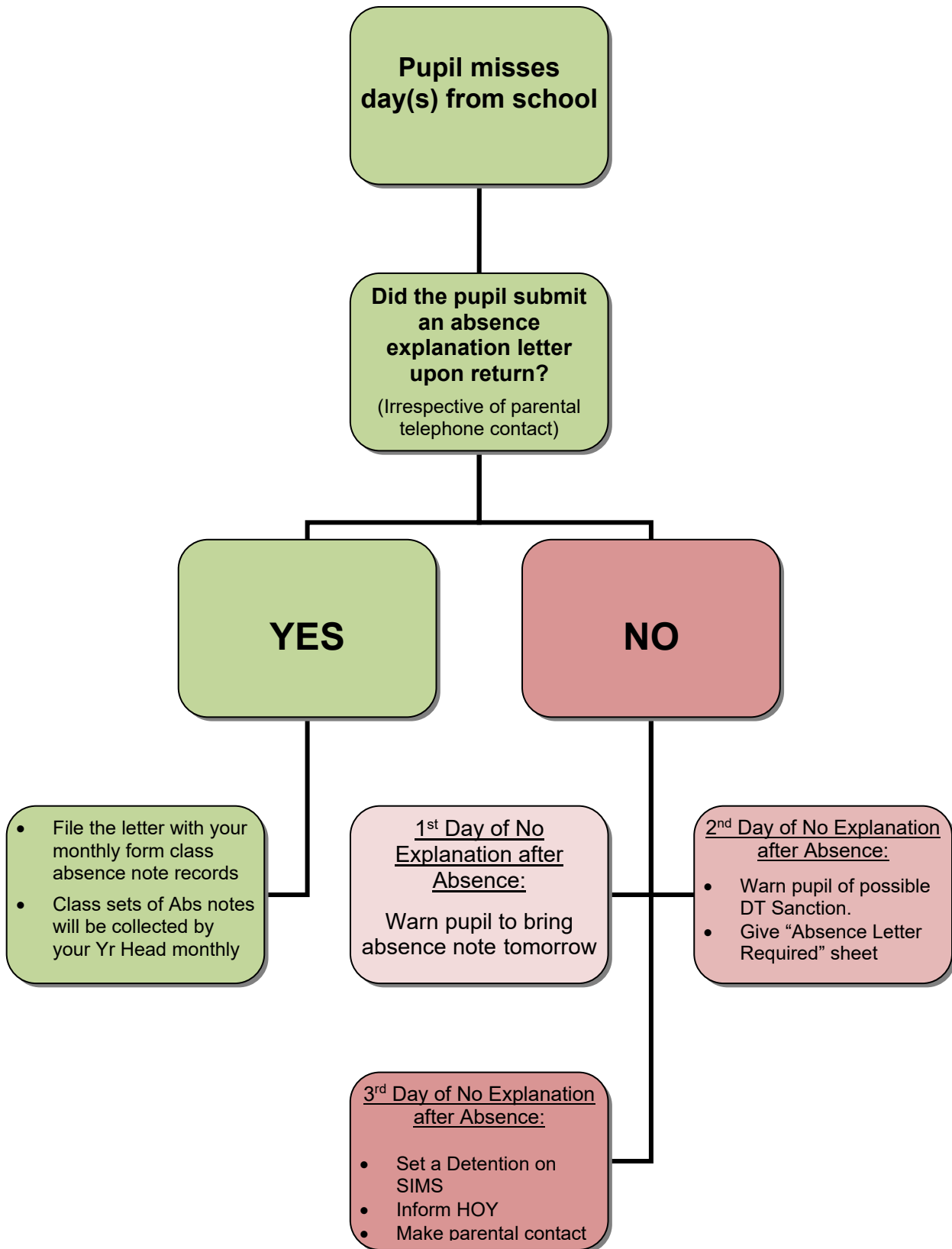
Dear Parent/Guardian

Please be advised that any holiday taken during term time is recorded on the school attendance module as an unauthorised absence. As such, this will have an impact upon your son's attendance level for the remainder of the school year. I would ask you to ensure that he makes every effort to attend daily as a further drop in attendance may require the intervention of the Education & Welfare officer assigned to our school.

Yours faithfully

Head of Year

ST MARY'S CBGS – ABSENCE NOTES

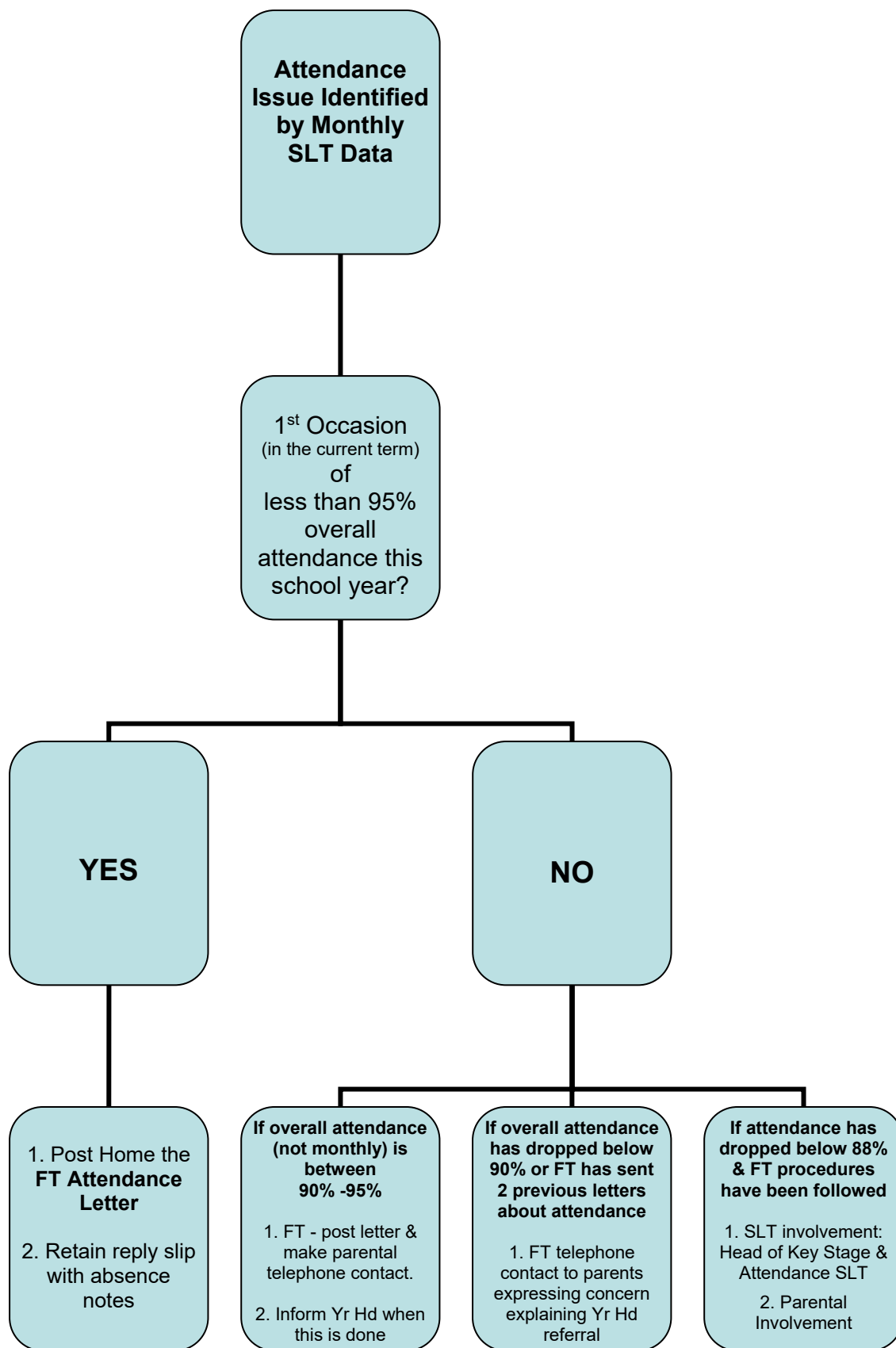


Key Stage 3 & 4 Form Teachers must ring home on the 3rd day of absence & inform Year Head

Yr 13 & 14 Form Teachers must ring home on the 2nd day of absence & inform Year Head

As a Form Teacher it is your responsibility to collect & retain absence notes. It is also your responsibility to follow these procedures if absence notes are not submitted.

ST MARY'S CBGS – ATTENDANCE PROCEDURES



Key Stage 3 & 4 Form Teachers must ring home on the 3rd day of absence & inform Year Head

Yr 13 & 14 Form Teachers must ring home on the 2nd day of absence & inform Year Head

There may be occasions when this process needs to be amended or fast tracked by the Year Head or SLT

APPROVALS

APPROVALS	
Principal:	
Chair of the Board of Governors:	
Date of Approval by Governors:	
Date of next annual review:	